

University of Minnesota, Morris

**New Student Characteristics
Fall 2007**

Tables and Charts

UMM Institutional Research

UMM New Student Characteristics
Fall 2007

Table of Contents

<u>Description</u>	<u>Page</u>
Trends in Admissions Scores of UMM Entering Students: High School Rank, ACT Composite Scores, AAR Index, 1990-2007 (table).	3
Distribution of Fall 2007 Freshman High School Ranks by U of MN Campus (four charts).	4
Distribution of Fall 2007 Freshman ACT Composite Scores by U of MN Campus (four charts)	5
Distribution of Fall 2007 Freshman High School Ranks by U of MN Campus (one chart)	6
Distribution of Fall 2007 Freshman ACT Composite Scores by U of MN Campus (one chart)	7
Trends in Average High School Rank of Entering Class for Selected U of MN Units, 1990-2007 (chart).	8
Trends in Average ACT Composite Score of Entering Class for Selected U of MN Units, 1990-2007 (chart).	8
Trends in UMM Student of Color Headcounts for the Student Body and New Freshmen, 1998-2007 (table).	9
Trends in UMM Student-of-Color Percentages within the Student Body and the Entering Freshman Class, 1998-2007 (charts)	10
Comparison of Ethnic Background in Fall 2007 New Freshman Class by U of MN Campus.	11
Gender Distribution of Fall 2007 New Freshmen Class by U of MN Campus.	12
Glossary.	13

Morris

New High School Freshmen Average High School Rank, ACT Composite Scores, and AAR Index

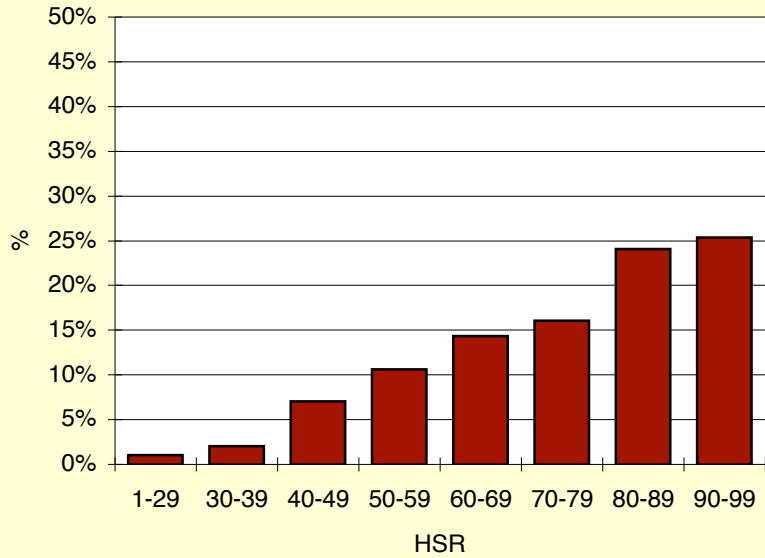
Fall of Year	UMM Campus Average		
	HSR	ACT Comp	AAR Index
1990	89.2	24.6	138.6
1991	88.6	24.9	138.6
1992	87.3	25.1	137.6
1993	86.1	25.3	137.1
1994	85.3	25.3	136.2
1995	83.9	24.9	133.6
1996	82.7	25.0	133.1
1997	81.0	24.7	130.7
1998	82.7	24.3	132.0
1999	82.1	24.1	130.0
2000	82.4	24.7	132.5
2001	77.3	24.4	125.6
2002	78.5	24.6	127.3
2003	77.9	24.8	127.5
2004	78.5	25.1	128.0
2005	75.7	24.6	124.7
2006	74.2	24.5	120.9
2007	75.4	25.1	125.3

AAR Index= (HSR+2*ACTcomp)

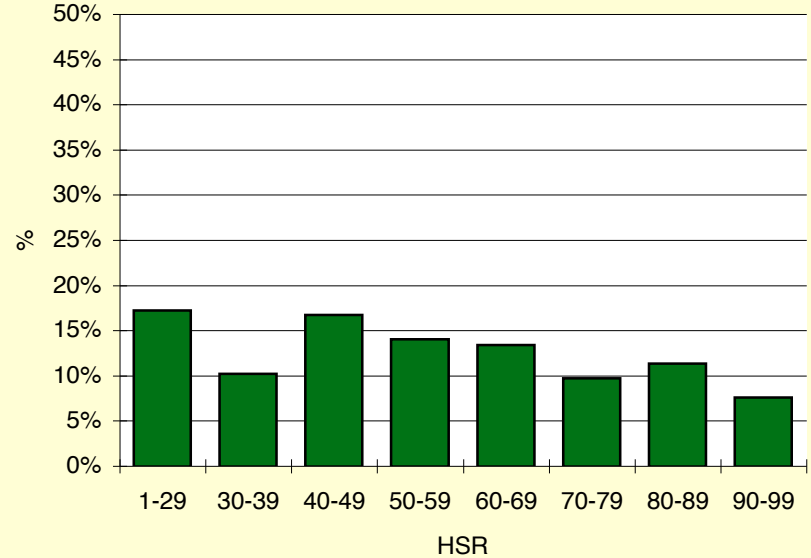
Source: *Institutional Research and Reporting*

Note: The official figure for the 2005 AAR Index is a corrected number still pending final approval.

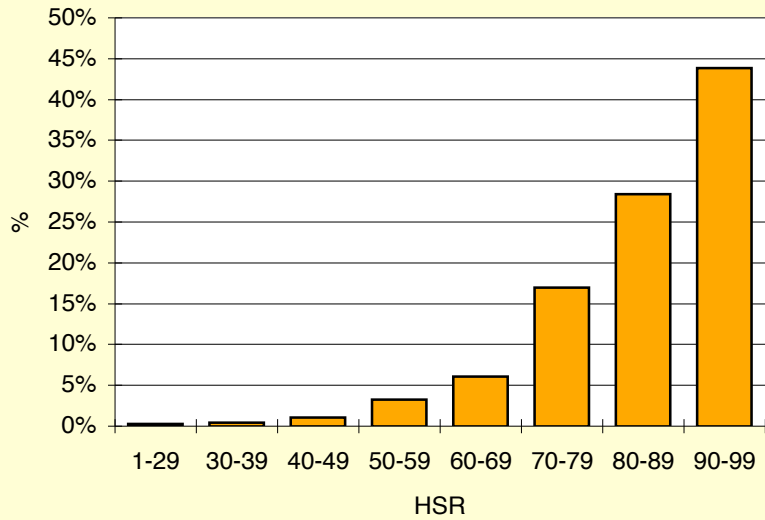
HSR of Fall 2007 UMM Freshmen



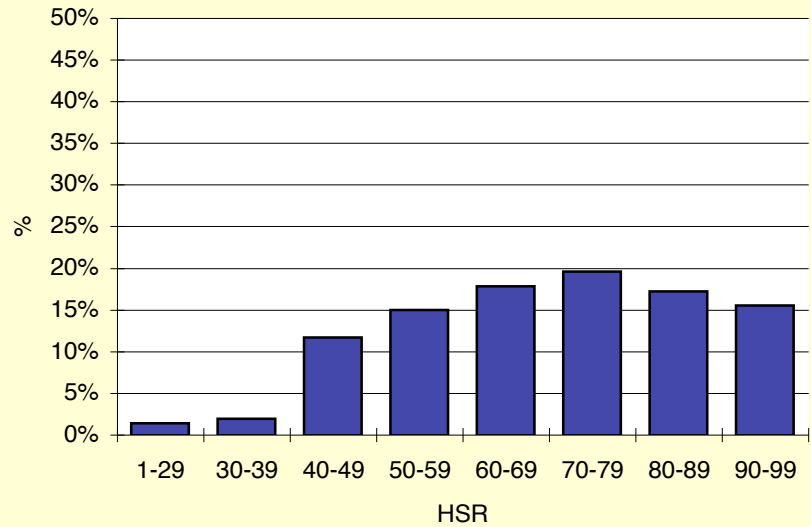
HSR of Fall 2007 UMC Freshmen



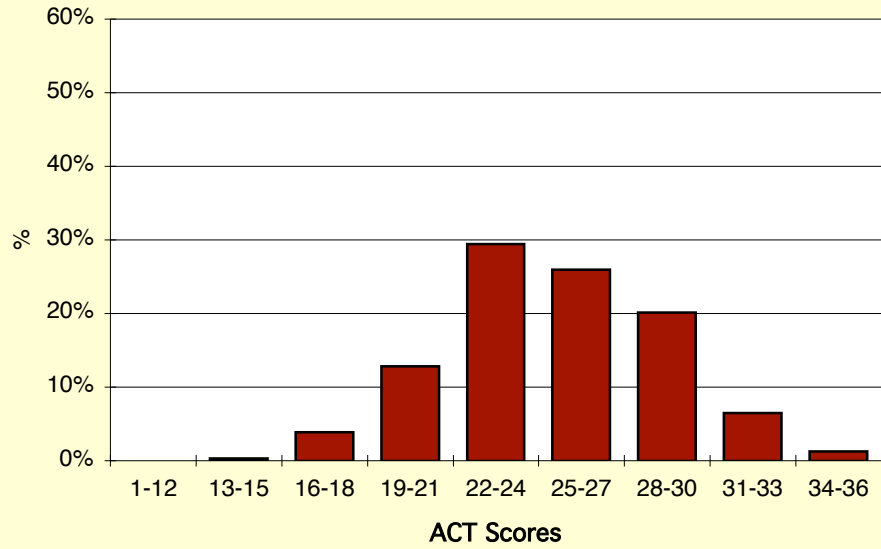
HSR of Fall 2007 UMTC Freshmen



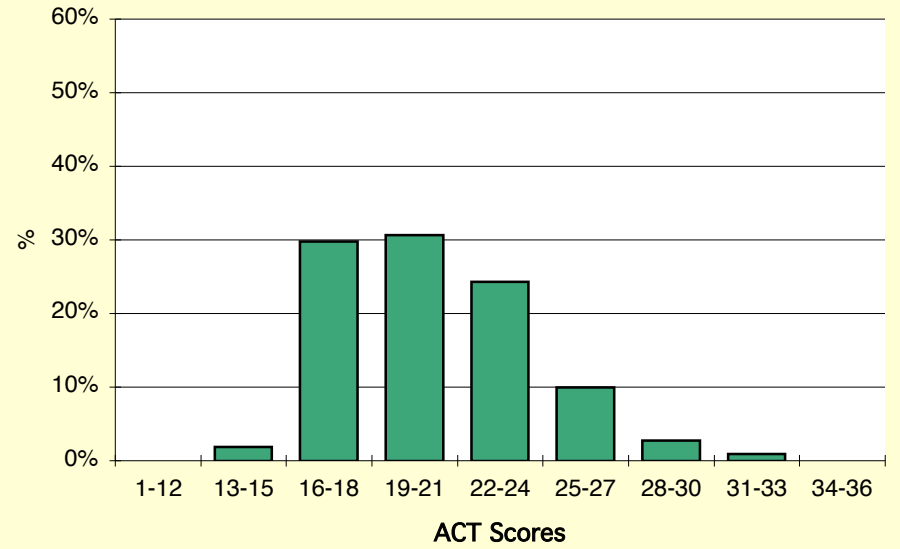
HSR of Fall 2007 UMD Freshmen



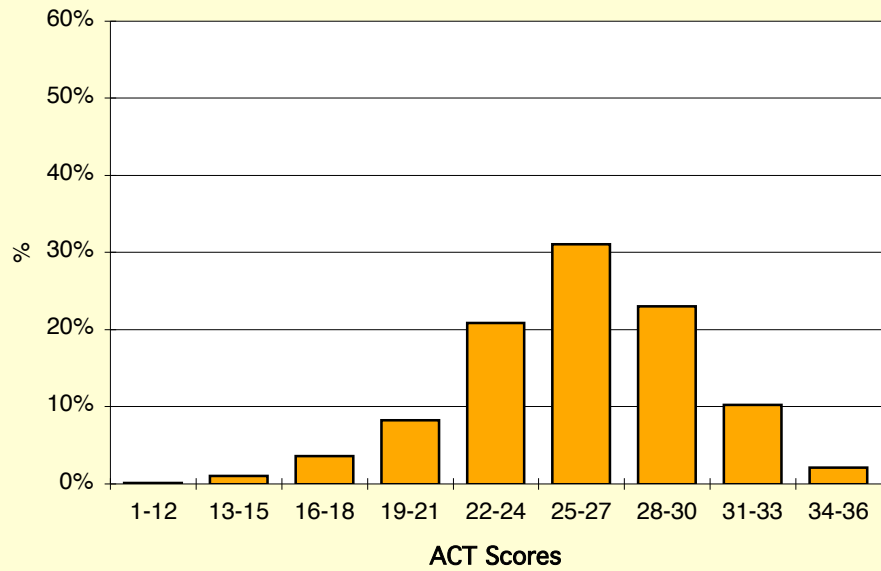
ACT Comp of Fall 2007 UMM Freshmen



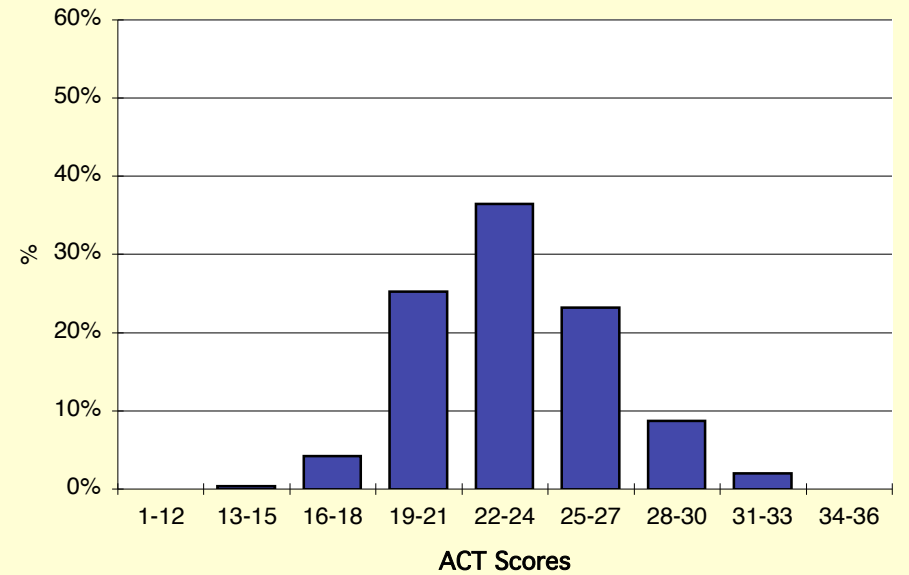
ACT Comp of Fall 2007 UMC Freshmen



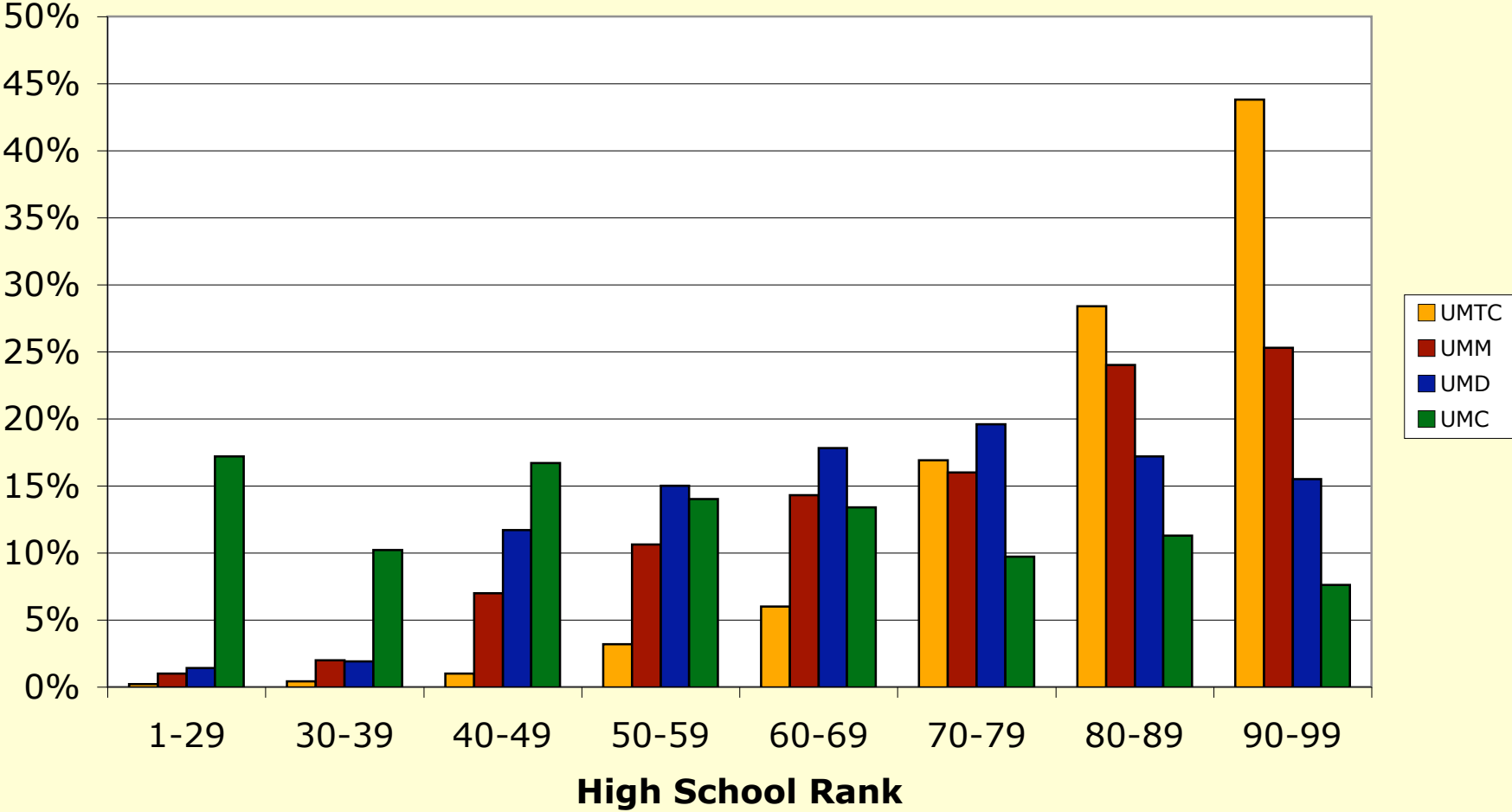
ACT Comp of Fall 2007 UMTC Freshmen



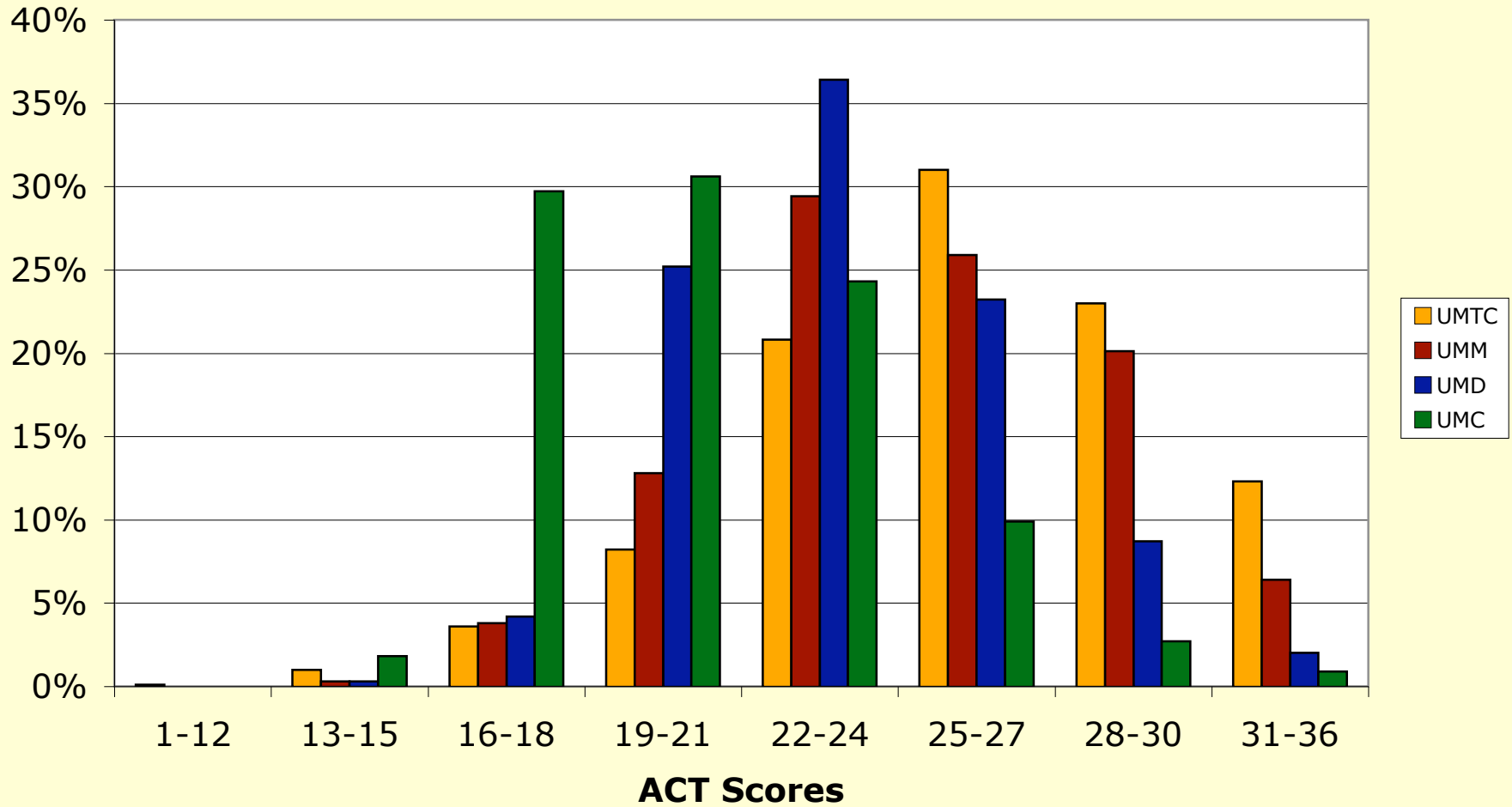
ACT Comp of Fall 2007 UMD Freshmen



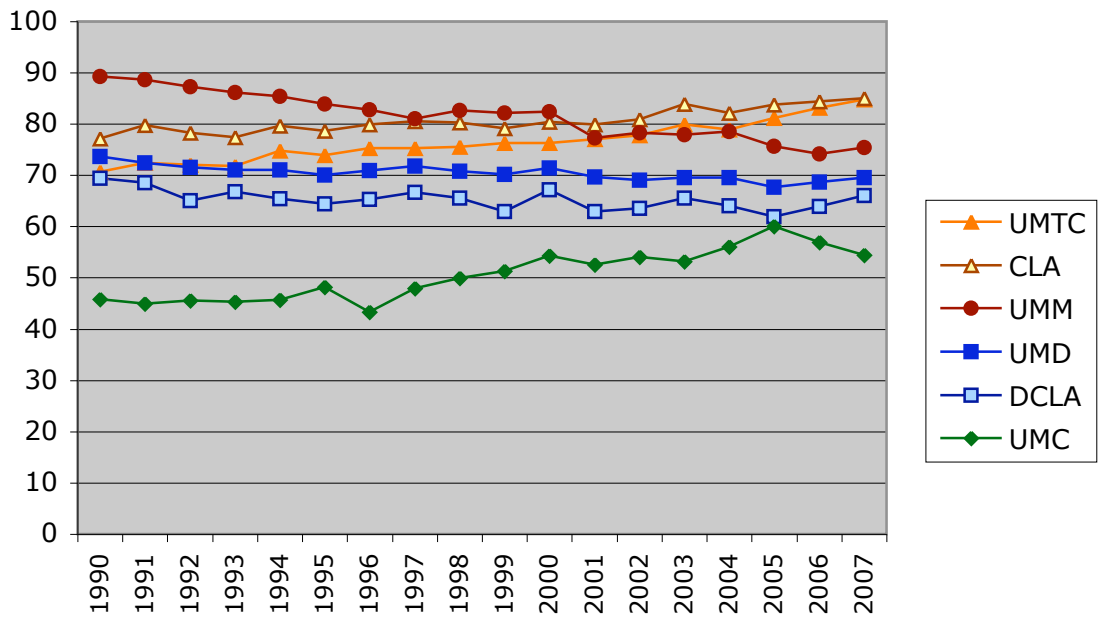
Distribution of High School Rank for F07 Freshmen for UMM, UMTC, UMD, UMC



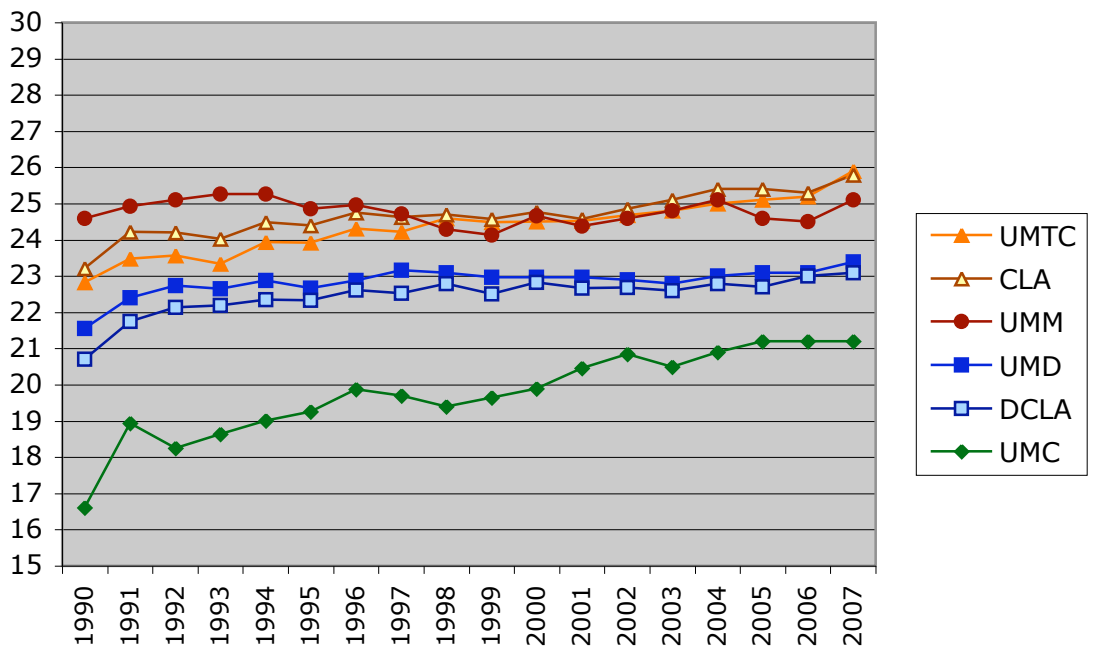
Distribution of ACT Comp Scores for F07 Freshmen for UMM, UMTC, UMD, UMC



University of Minnesota Average High School Rank of Entering Class



University of Minnesota Average ACT Composite Score of Entering Class



UMM Fall Headcount by Ethnic Background

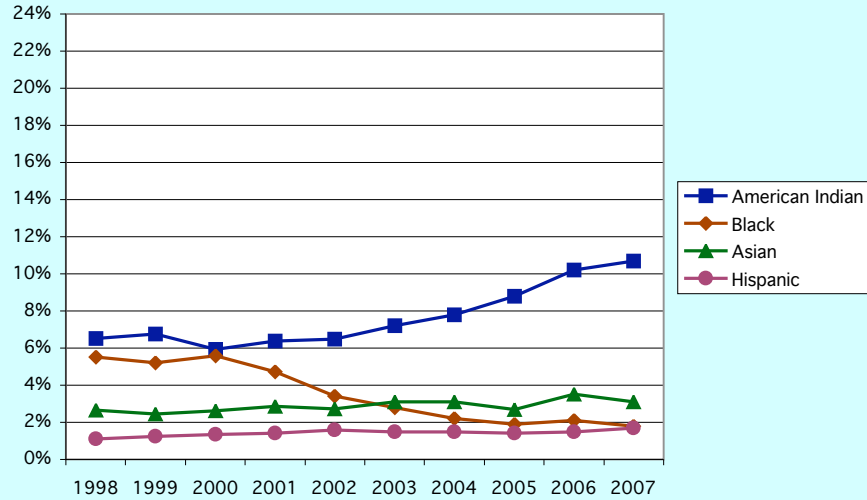
Student Body	Fall 1998		Fall 1999		Fall 2000		Fall 2001		Fall 2002		Fall 2003		Fall 2004		Fall 2005		Fall 2006		Fall 2007	
American Indian	125	6.5%	126	6.7%	109	5.9%	123	6.4%	125	6.5%	134	7.2%	143	7.8%	148	8.8%	178	10.2%	181	10.7%
Asian	51	2.7%	46	2.5%	48	2.6%	55	2.9%	52	2.7%	57	3.1%	57	3.1%	46	2.7%	61	3.5%	52	3.1%
African American	106	5.5%	97	5.2%	103	5.6%	91	4.7%	65	3.4%	52	2.8%	41	2.2%	32	1.9%	36	2.1%	31	1.8%
Hispanic	<u>21</u>	1.1%	<u>23</u>	1.2%	<u>25</u>	1.4%	<u>27</u>	1.4%	<u>30</u>	1.6%	<u>28</u>	1.5%	<u>28</u>	1.5%	<u>23</u>	1.4%	<u>27</u>	1.5%	<u>29</u>	1.7%
Subtotal Students of Color	303	15.8%	292	15.6%	285	15.5%	296	15.4%	272	14.2%	271	14.6%	269	14.6%	249	14.8%	302	17.3%	293	17.4%
White	1588	82.8%	1547	82.9%	1501	81.5%	1550	80.4%	1542	80.7%	1497	80.4%	1459	79.3%	1313	78.0%	1302	74.5%	1244	73.8%
International	8	0.4%	15	0.8%	6	0.3%	15	0.8%	21	1.1%	21	1.1%	22	1.2%	19	1.1%	30	1.7%	46	2.7%
Unknown	18	0.9%	13	0.7%	50	2.7%	66	3.4%	75	3.9%	72	3.9%	89	4.8%	103	6.1%	113	6.5%	103	6.1%
Total Headcount	1917	100%	1867	100%	1842	100%	1927	100%	1910	100%	1861	100%	1839	100%	1684	100%	1747	100%	1686	100%

NHS New High School	Fall 1998		Fall 1999		Fall 2000		Fall 2001		Fall 2002		Fall 2003		Fall 2004		Fall 2005		Fall 2006		Fall 2007	
American Indian	40	7.3%	30	6.6%	22	4.6%	31	6.5%	29	6.1%	31	7.5%	37	9.6%	41	11.5%	43	11.3%	29	8.0%
Asian	16	2.9%	11	2.4%	16	3.4%	14	2.9%	11	2.3%	12	2.9%	17	4.4%	14	3.9%	17	4.5%	15	4.1%
African American	21	3.8%	21	4.6%	20	4.2%	17	3.5%	13	2.7%	7	1.7%	6	1.6%	7	2.0%	14	3.7%	6	1.7%
Hispanic	<u>2</u>	0.4%	<u>3</u>	0.7%	<u>6</u>	1.3%	<u>8</u>	1.7%	<u>9</u>	1.9%	<u>6</u>	1.5%	<u>7</u>	1.8%	<u>6</u>	1.7%	<u>6</u>	1.6%	<u>9</u>	2.5%
Subtotal Students of Color	79	14.4%	65	14.2%	64	13.5%	70	14.6%	62	13.0%	56	13.6%	67	17.3%	68	19.0%	80	21.1%	59	16.3%
White	466	84.9%	389	85.1%	393	82.9%	399	83.1%	404	84.7%	349	84.7%	306	79.1%	278	77.7%	285	75.0%	285	78.5%
International	3	0.5%	1	0.2%	2	0.4%	5	1.0%	4	0.8%	2	0.5%	6	1.6%	3	0.8%	7	1.8%	8	2.2%
Unknown	1	0.2%	2	0.4%	15	3.2%	6	1.3%	7	1.5%	5	1.2%	8	2.1%	9	2.5%	8	2.1%	11	3.0%
Total Headcount	549	100%	457	100%	474	100%	480	100%	477	100%	412	100%	387	100%	358	100%	380	100%	363	100%

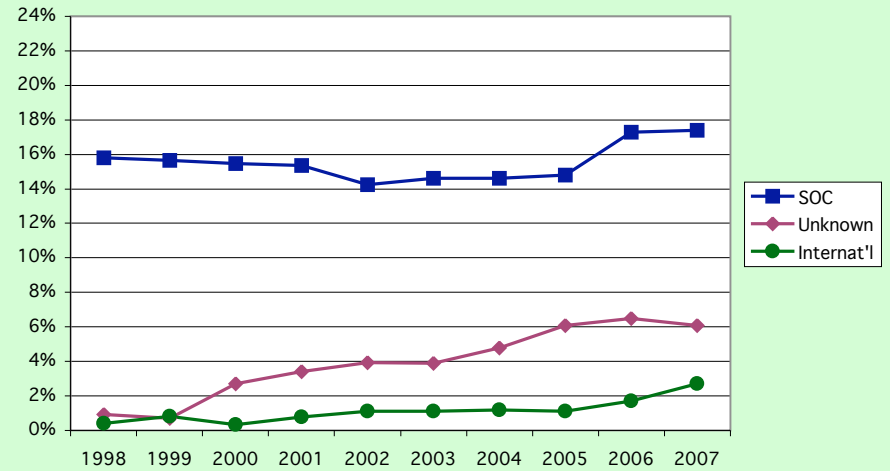
NAS New Advanced Standing	Fall 1998		Fall 1999		Fall 2000		Fall 2001		Fall 2002		Fall 2003		Fall 2004		Fall 2005		Fall 2006		Fall 2007	
American Indian	7	7.0%	10	12.8%	11	11.7%	9	11.0%	5	7.5%	6	8.1%	10	15.9%	10	17.9%	19	17.9%	13	12.9%
Asian	1	1.0%	1	1.3%	3	3.2%	2	2.4%	3	4.5%	4	5.4%	0	0.0%	0	0.0%	3	2.8%	3	3.0%
African American	4	4.0%	7	9.0%	11	11.7%	7	8.5%	1	1.5%	3	4.1%	2	3.2%	0	0.0%	2	1.9%	2	2.0%
Hispanic	<u>2</u>	2.0%	<u>2</u>	2.6%	<u>3</u>	3.2%	<u>3</u>	3.7%	<u>3</u>	4.5%	<u>2</u>	2.7%	<u>2</u>	3.2%	<u>0</u>	0.0%	<u>2</u>	1.9%	<u>1</u>	1.0%
Subtotal Students of Color	14	14.0%	20	25.6%	28	29.8%	21	25.6%	12	17.9%	15	20.3%	14	22.2%	10	17.9%	26	24.5%	19	18.8%
White	74	74.0%	57	73.1%	59	62.8%	51	62.2%	49	73.1%	52	70.3%	44	69.8%	38	67.9%	60	56.6%	62	61.4%
International	0	0.0%	1	1.3%	0	0.0%	2	2.4%	1	1.5%	2	2.7%	3	4.8%	3	5.4%	14	13.2%	17	16.8%
Unknown	12	12.0%	0	0.0%	7	7.4%	8	9.8%	5	7.5%	5	6.8%	2	3.2%	5	8.9%	6	5.7%	3	3.0%
Total Headcount	100	100%	78	100%	94	100%	82	100%	67	100%	74	100%	63	100%	56	100%	106	100%	101	100%

Source: UMM Institutional Research extract of OIR-TC official fall stix file

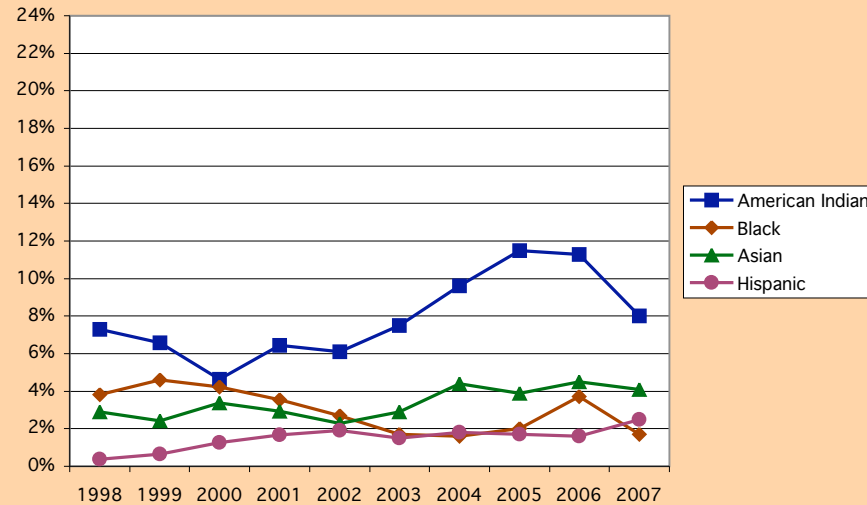
**UMM Students of Color
as % of Total Fall Headcount**



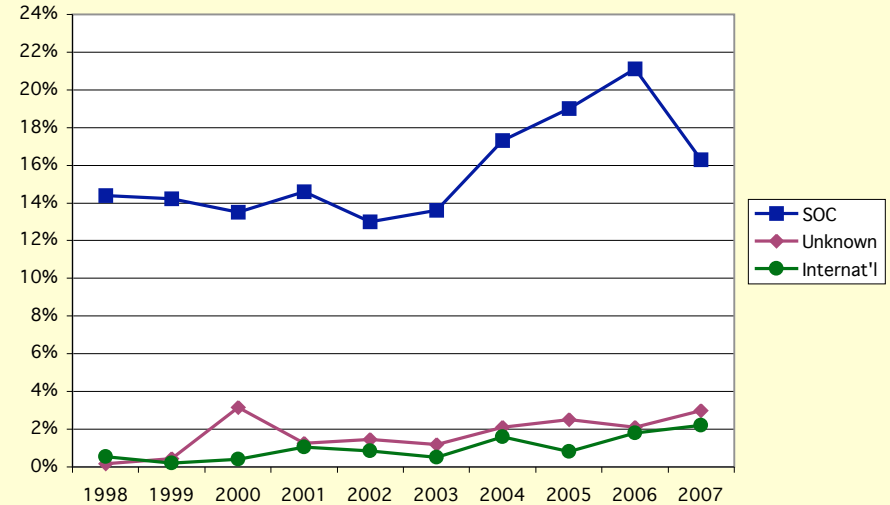
**UMM Students of Color (SOC),
International, Unknown Students
as % of Total Fall Headcount**



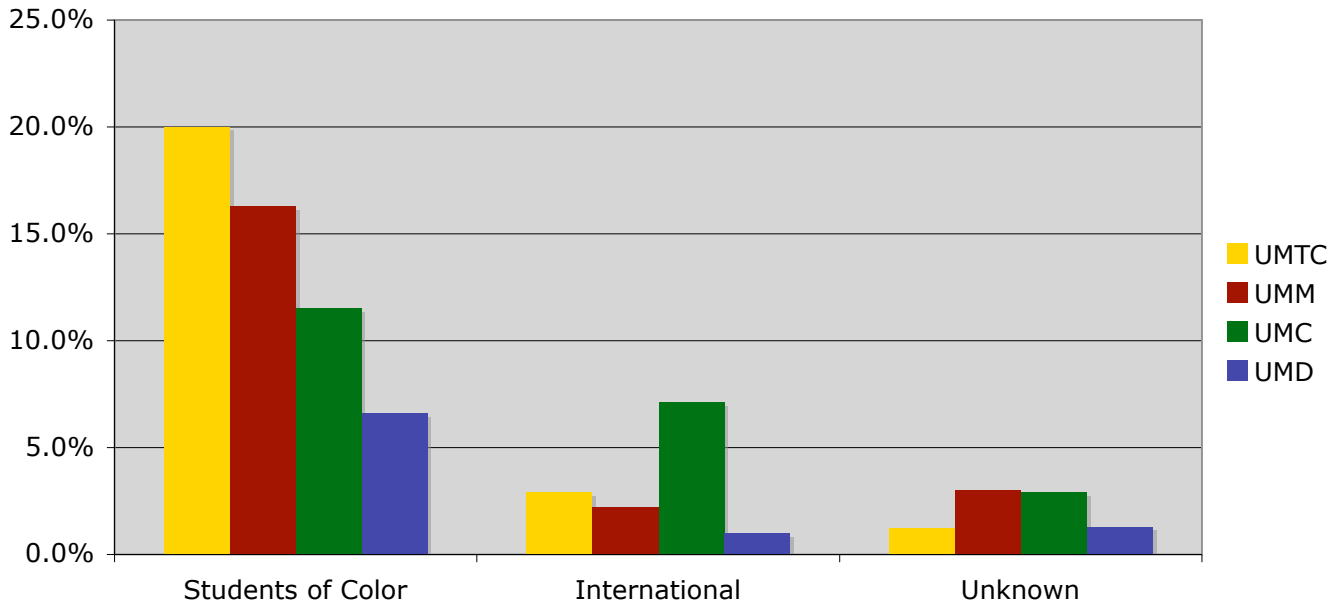
**UMM New High School Fall Freshmen
Students of Color**



**UMM New High School Fall Freshmen
Students of Color (SOC), International, Unknown Students**

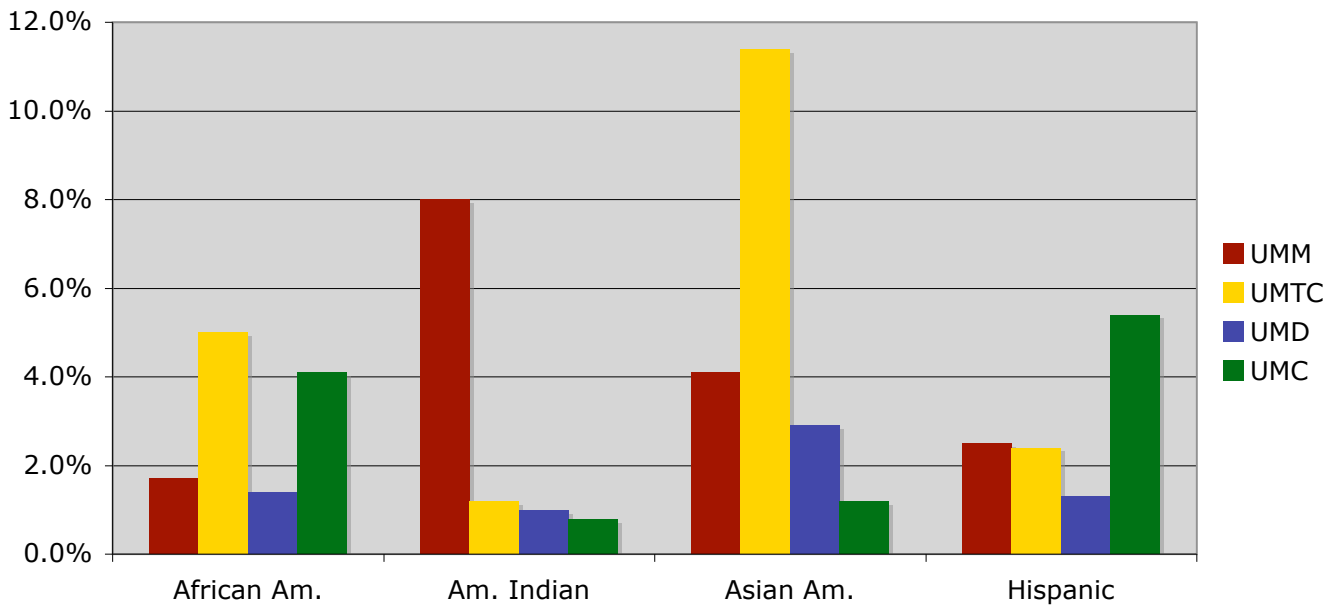


Ethnic Background Fall 2007 NHS* Freshmen by U of MN Campus



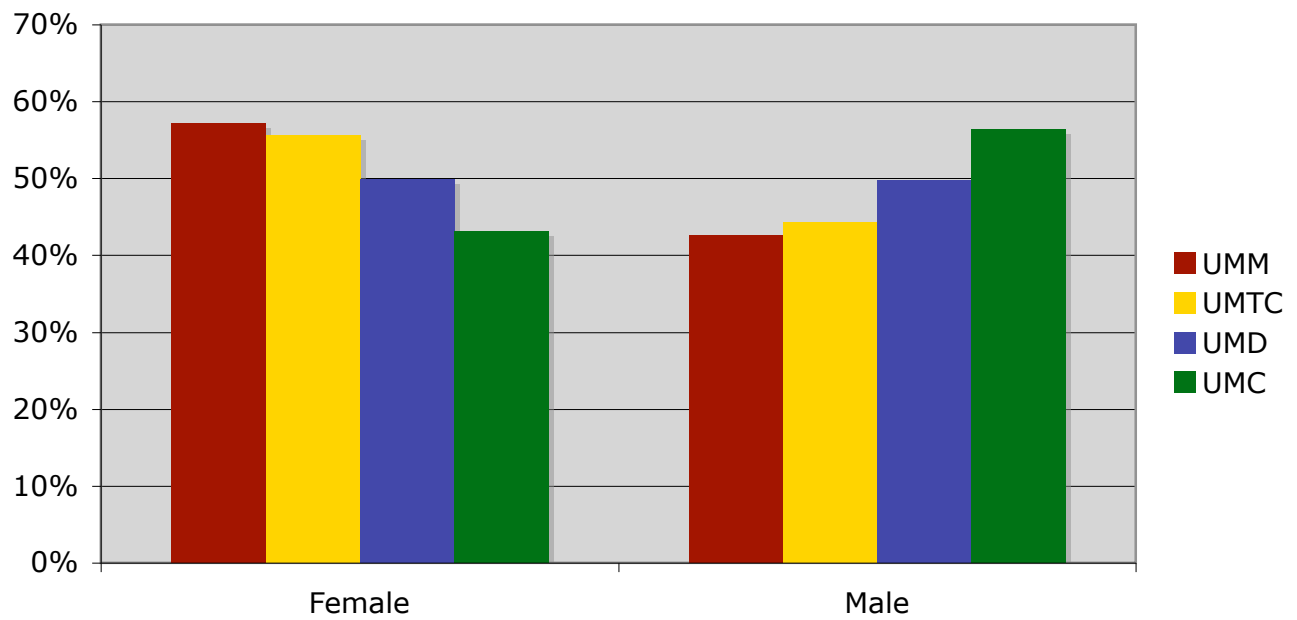
*NHS=new high school

Students of Color as Percentage of Fall 2007 NHS* Freshmen by U of MN Campus



*NHS=new high school

Gender Distribution Fall 2007 NHS* Freshmen by U of MN Campus



*NHS=new high school

UMM New Student Characteristics
Fall 2007

GLOSSARY

<u>Term</u>	<u>Definition</u>
AAR Index	= (HSR + 2 x ACTcomp)
ACT	American College Testing Program
ACT Comp	ACT composite score
CLA	College of Liberal Arts on the Twin Cities Campus
DCLA	College of Liberal Arts on the Duluth Campus
HSR	High School Rank
NHS	New high school freshmen
UMC	University of Minnesota, Crookston
UMD	University of Minnesota, Duluth
UMM	University of Minnesota, Morris
UMTC	University of Minnesota, Twin Cities