

**University of Minnesota, Morris**

**New Student Characteristics  
Fall 2005**

**Tables and Charts**

*UMM Institutional Research*

UMM New Student Characteristics  
Fall 2005

*Table of Contents*

<u>Description</u>	<u>Page</u>
Trends in Admissions Scores of UMM Entering Students: High School Rank, ACT Composite Scores, AAR Index, 1990-2005 (table). . . . .	3
Distribution of Fall 2005 Freshman High School Ranks by Campus (four charts). . . . .	4
Distribution of Fall 2005 Freshman ACT Composite Scores by Campus (four charts) . . . . .	5
Distribution of Fall 2005 Freshman High School Ranks by Campus (one chart) . . . . .	6
Distribution of Fall 2005 Freshman ACT Composite Scores by Campus (one chart) . . . . .	7
Trends in Average High School Rank of Entering Class for Selected University of Minnesota Units, 1990-2005 (chart).	8
Trends in Average ACT Composite Score of Entering Class for Selected University of Minnesota Units, 1990-2005 (chart).	8
Trends in UMM Student of Color Headcounts for the Student Body and New Freshmen, 1995-2005 (table). . . . .	9
Trends in UMM Student-of-Color Percentages within the Student Body and the Entering Freshman Class, 1993-2005 (charts) . . . . .	10
Comparison of Ethnic Background in Fall 2005 New Freshman Class by Campus. . . . .	11
Gender Distribution of Fall 2005 New Freshmen Class. . . . .	12
Glossary. . . . .	13

## Morris

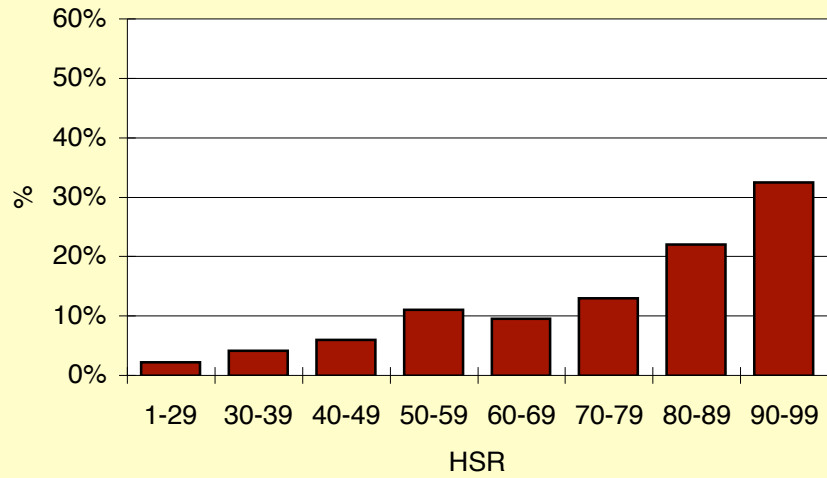
### New High School Freshmen Average High School Rank, ACT Composite Scores, and AAR Index

<b>Fall of Year</b>	<b>UMM Campus Average</b>		
	<b>HSR</b>	<b>ACT Comp</b>	<b>AAR Index</b>
<b>1990</b>	89.2	24.6	138.6
<b>1991</b>	88.6	24.9	138.6
<b>1992</b>	87.3	25.1	137.6
<b>1993</b>	86.1	25.3	137.1
<b>1994</b>	85.3	25.3	136.2
<b>1995</b>	83.9	24.9	133.6
<b>1996</b>	82.7	25.0	133.1
<b>1997</b>	81.0	24.7	130.7
<b>1998</b>	82.7	24.3	132.0
<b>1999</b>	82.1	24.1	130.0
<b>2000</b>	82.4	24.7	132.5
<b>2001</b>	77.3	24.4	125.6
<b>2002</b>	78.3	24.6	127.3
<b>2003</b>	77.9	24.8	127.5
<b>2004</b>	78.5	25.1	128.0
<b>2005</b>	75.7	24.6	118.5

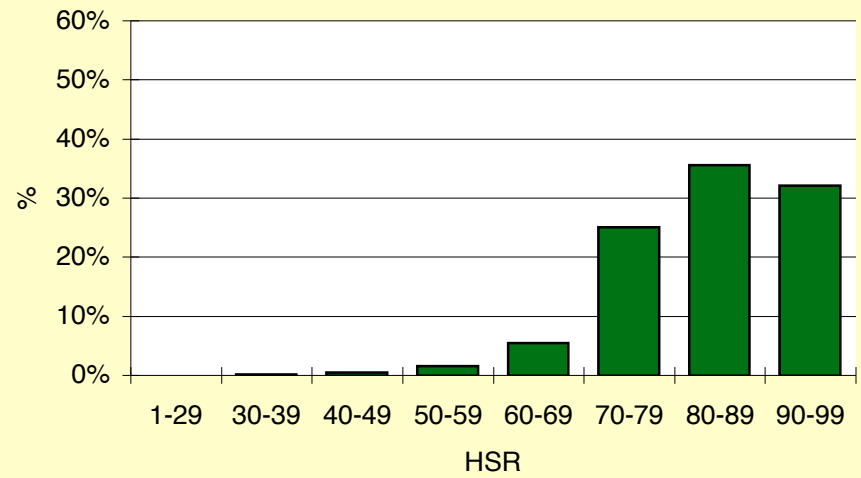
AAR Index= (HSR+2\*ACTcomp)

Source: Institutional Research and Reporting

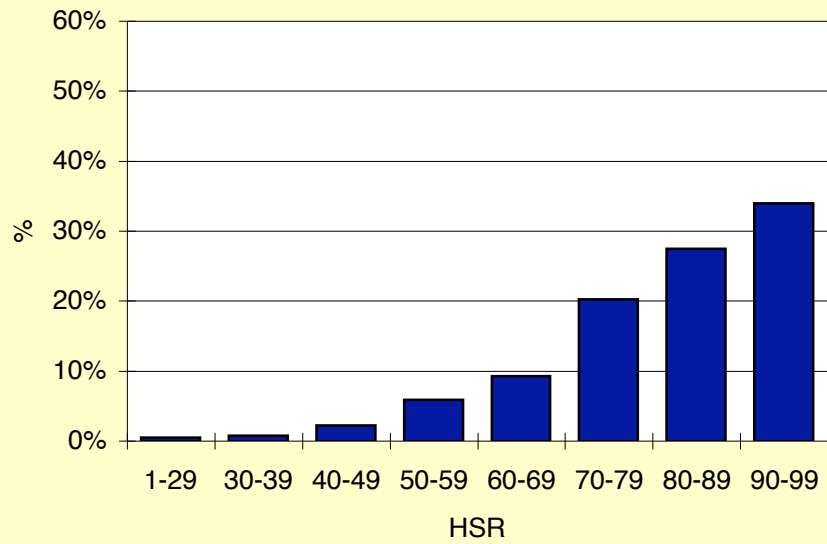
**HSR of Fall 2005 UMM Freshmen**



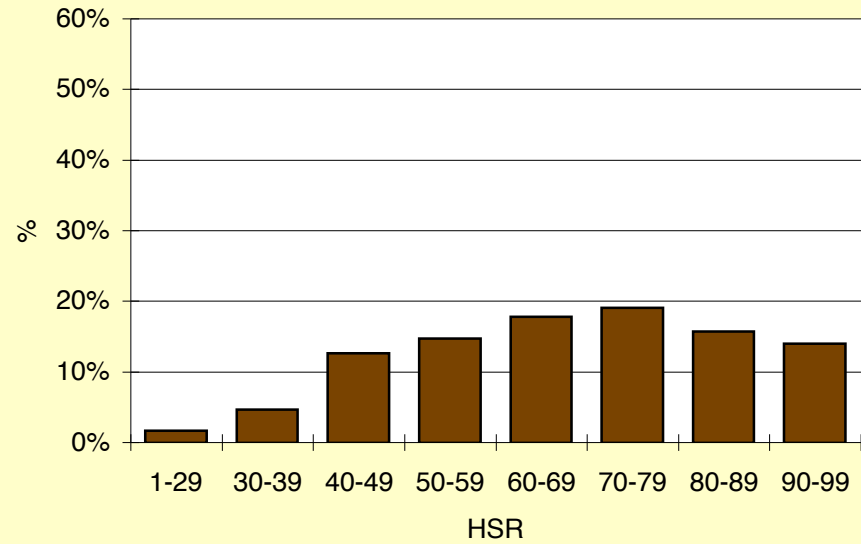
**HSR of Fall 2005 CLA Freshmen**



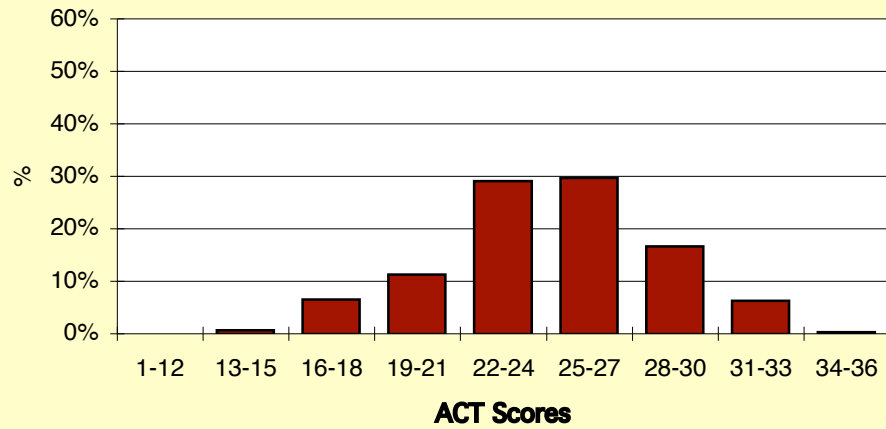
**HSR of Fall 2005 UMMC Freshmen**



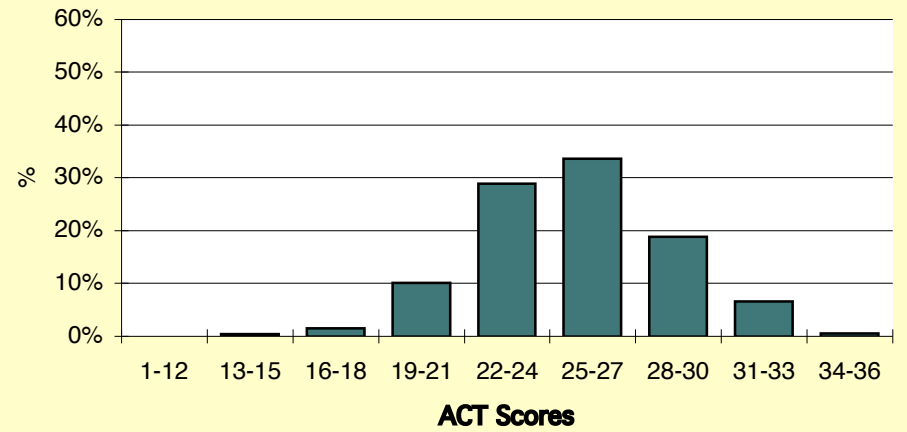
**HSR of Fall 2005 UMD Freshmen**



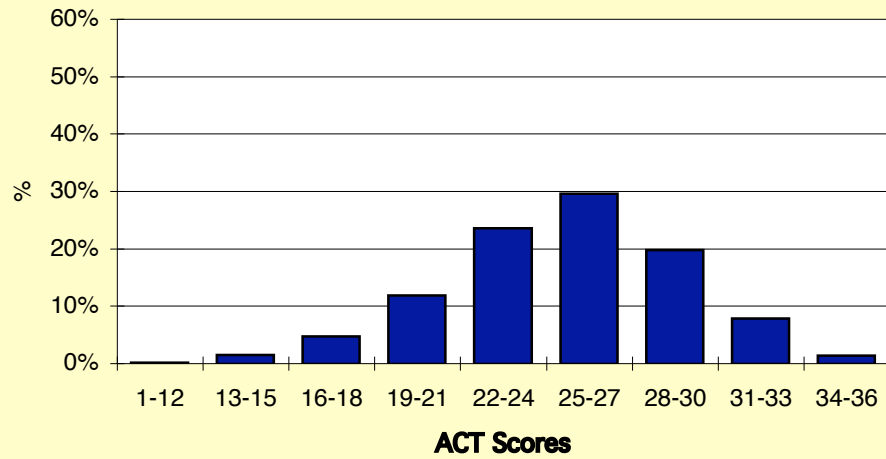
**ACT Comp of Fall 2005 UMM Freshmen**



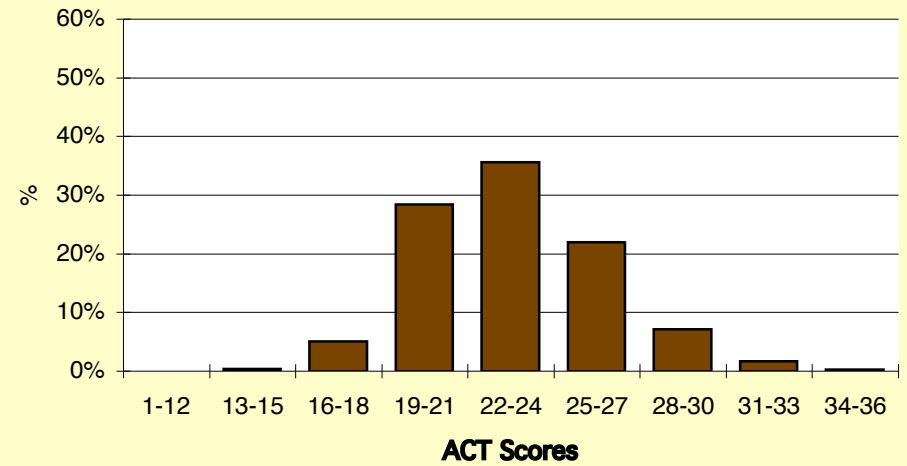
**ACT Comp of Fall 2005 CLA Freshmen**



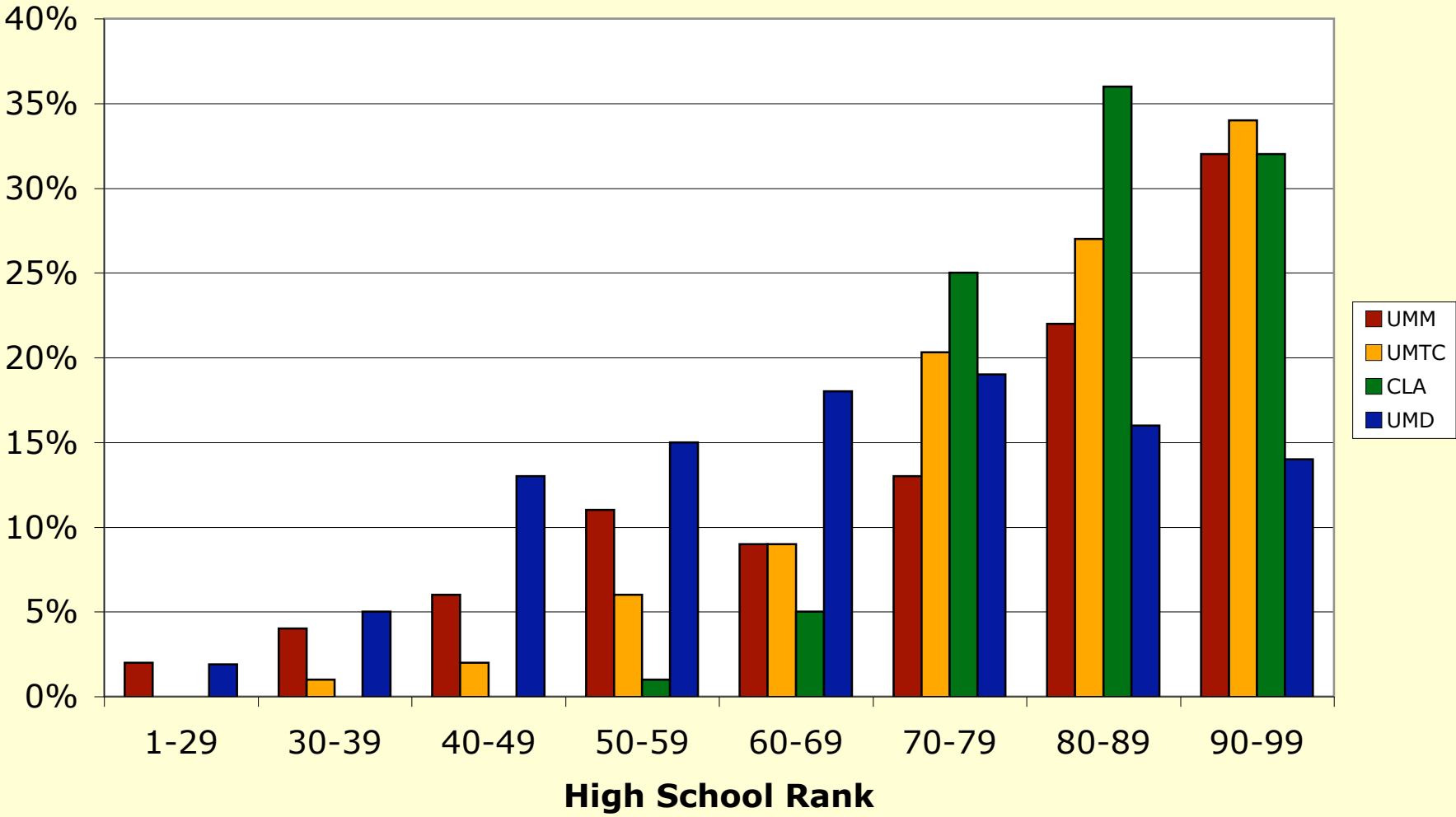
**ACT Comp of Fall 2005 UMTC Freshmen**



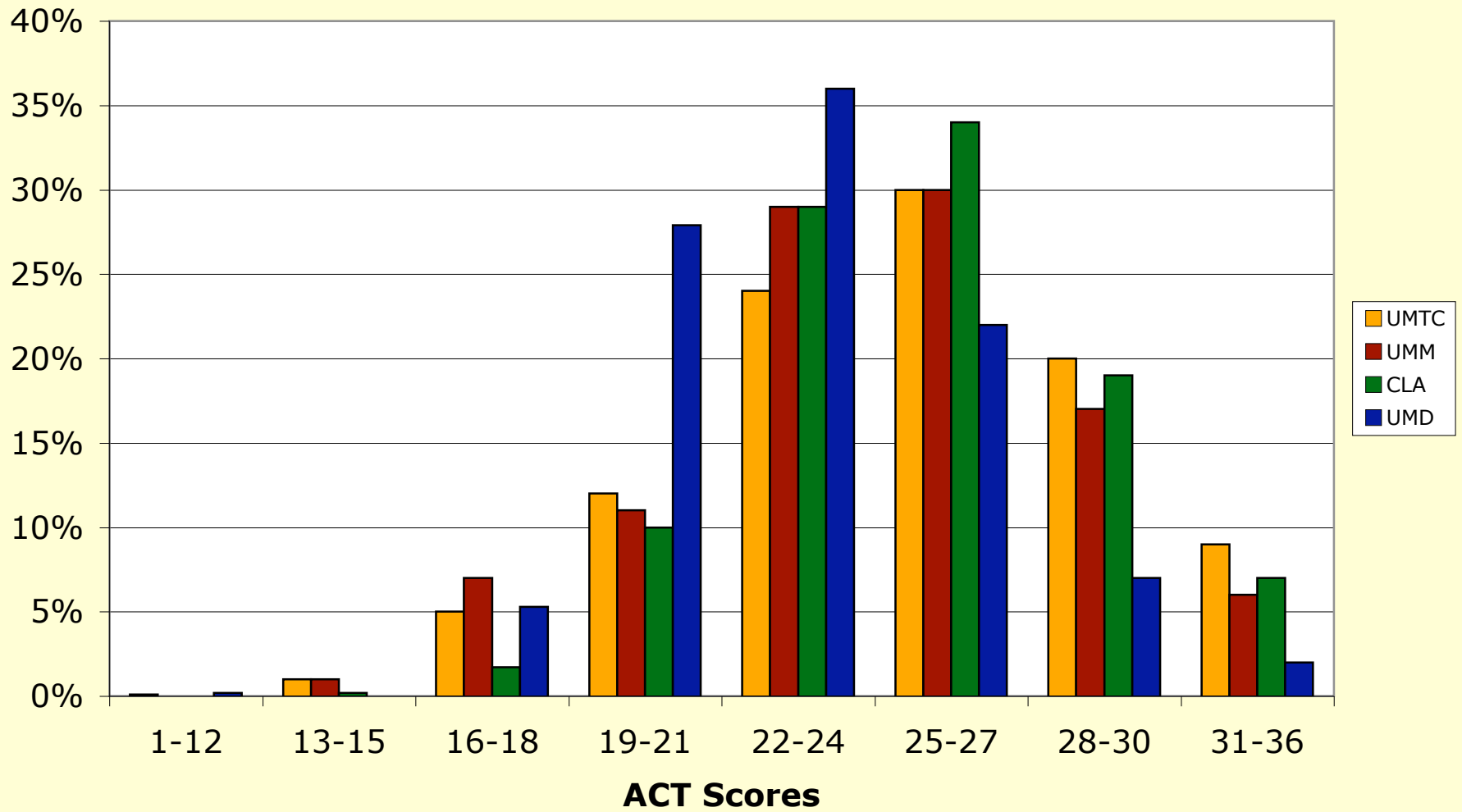
**ACT Comp of Fall 2005 UMD Freshmen**



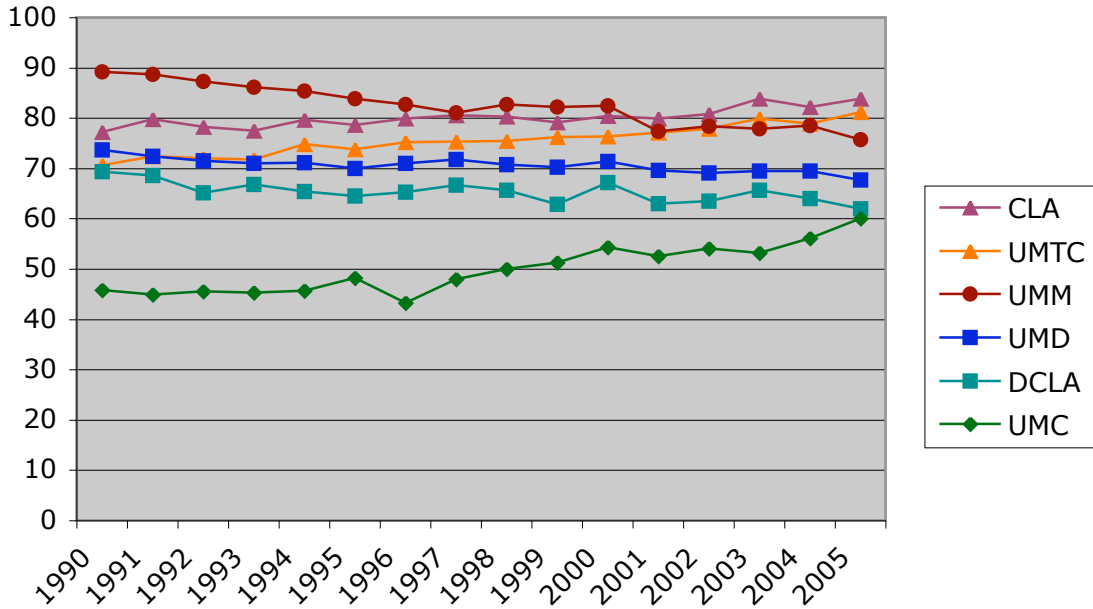
### Distribution of High School Rank for F05 Freshmen for UMM, UMTC, UMD, CLA



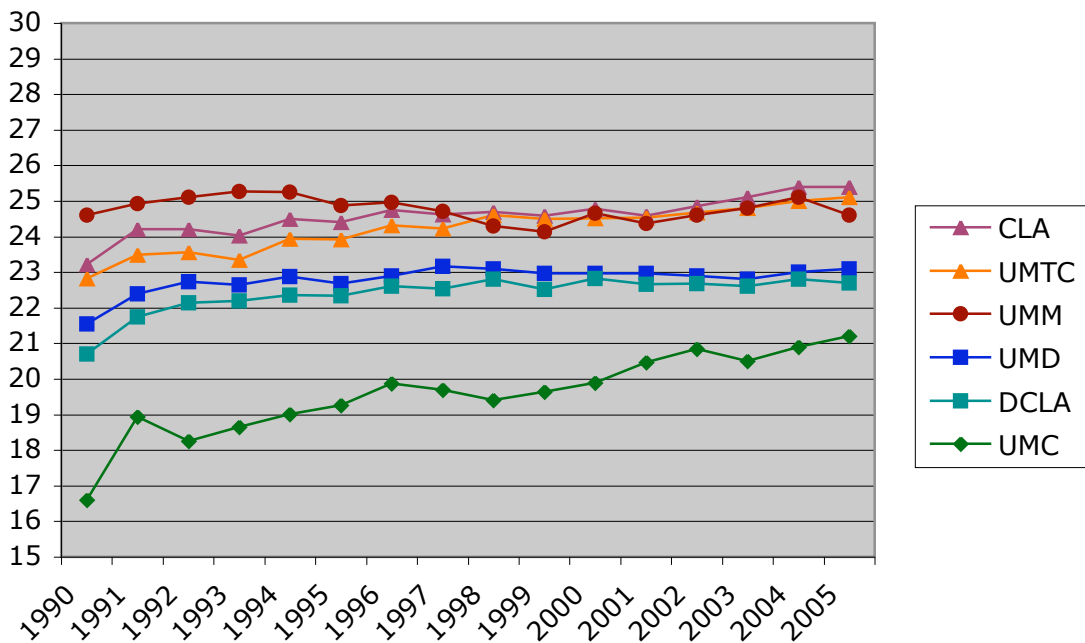
## Distribution of ACT Comp Scores for F05 Freshmen for UMM, UMTC, UMD, CLA



### University of Minnesota Average High School Rank of Entering Class



### University of Minnesota Average ACT Composite Score of Entering Class



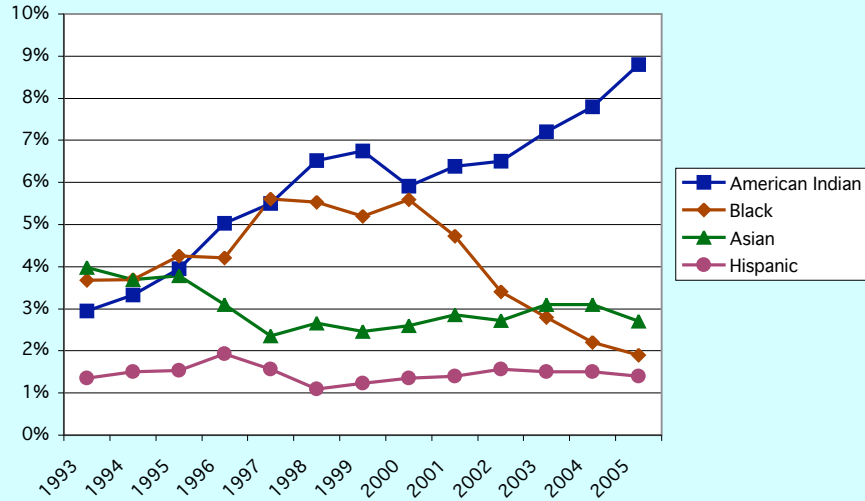
### UMM Fall Headcount by Ethnic Background

<b>Student Body</b>	Fall 1995		Fall 1996		Fall 1997		Fall 1998		Fall 1999		Fall 2000		Fall 2001		Fall 2002		Fall 2003		Fall 2004		Fall 2005	
American Indian	77	3.9%	99	5.0%	105	5.5%	125	6.5%	126	6.7%	109	5.9%	123	6.4%	125	6.5%	134	7.2%	143	8.5%	148	8.8%
Asian	74	3.8%	61	3.1%	45	2.4%	51	2.7%	46	2.5%	48	2.6%	55	2.9%	52	2.7%	57	3.1%	57	3.4%	46	2.7%
Black	83	4.3%	83	4.2%	107	5.6%	106	5.5%	97	5.2%	103	5.6%	91	4.7%	65	3.4%	52	2.8%	41	2.4%	32	1.9%
Hispanic	<u>30</u>	1.5%	<u>38</u>	1.9%	<u>30</u>	1.6%	<u>21</u>	1.1%	<u>23</u>	1.2%	<u>25</u>	1.4%	<u>27</u>	1.4%	<u>30</u>	1.6%	<u>28</u>	1.5%	<u>28</u>	1.7%	<u>23</u>	1.4%
Subtotal Students of Color	264	13.5%	281	14.3%	287	15.0%	303	15.8%	292	15.6%	285	15.5%	296	15.4%	272	14.2%	271	14.6%	269	16.0%	249	14.8%
White	1659	85.0%	1662	84.4%	1589	83.3%	1588	82.8%	1547	82.9%	1501	81.5%	1550	80.4%	1542	80.7%	1497	80.4%	1459	86.6%	1313	78.0%
International	18	0.9%	17	0.9%	24	1.3%	8	0.4%	15	0.8%	6	0.3%	15	0.8%	21	1.1%	21	1.1%	22	1.3%	19	1.1%
Unknown	11	0.6%	10	0.5%	8	0.4%	18	0.9%	13	0.7%	50	2.7%	66	3.4%	75	3.9%	72	3.9%	89	5.3%	103	6.1%
Total Headcount	1952	100%	1970	100%	1908	100%	1917	100%	1867	100%	1842	100%	1927	100%	1910	100%	1861	100%	1839	100%	1684	100%

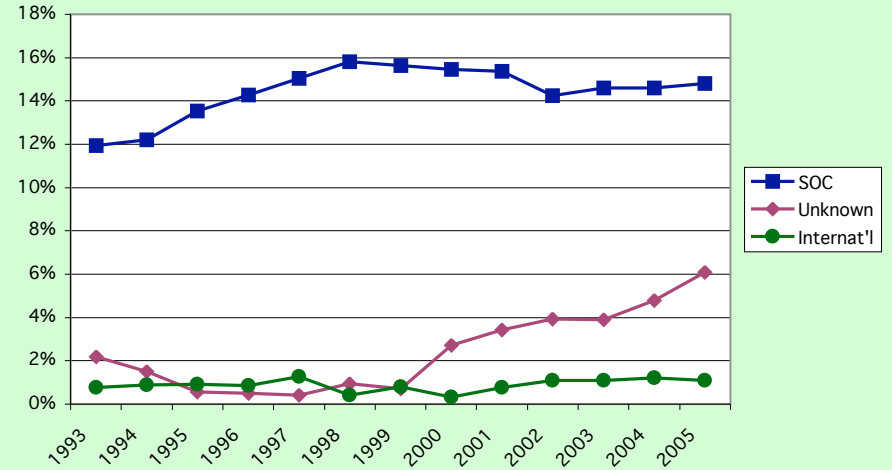
<b>NHS New High School</b>	Fall 1995		Fall 1996		Fall 1997		Fall 1998		Fall 1999		Fall 2000		Fall 2001		Fall 2002		Fall 2003		Fall 2004		Fall 2005	
American Indian	17	3.2%	31	5.6%	23	4.6%	40	7.3%	30	6.6%	22	4.6%	31	6.5%	29	6.1%	31	7.5%	37	10.3%	41	11.5%
Asian	18	3.4%	15	2.7%	11	2.2%	16	2.9%	11	2.4%	16	3.4%	14	2.9%	11	2.3%	12	2.9%	17	4.7%	14	3.9%
Black	33	6.2%	19	3.5%	35	7.1%	21	3.8%	21	4.6%	20	4.2%	17	3.5%	13	2.7%	7	1.7%	6	1.7%	7	2.0%
Hispanic	<u>5</u>	0.9%	<u>12</u>	2.2%	<u>7</u>	1.4%	<u>2</u>	0.4%	<u>3</u>	0.7%	<u>6</u>	1.3%	<u>8</u>	1.7%	<u>9</u>	1.9%	<u>6</u>	1.5%	<u>7</u>	2.0%	<u>6</u>	1.7%
Subtotal Students of Color	73	13.7%	77	14.0%	76	15.4%	79	14.4%	65	14.2%	64	13.5%	70	14.6%	62	13.0%	56	13.6%	67	18.7%	68	19.0%
White	453	84.8%	467	84.9%	416	84.0%	466	84.9%	389	85.1%	393	82.9%	399	83.1%	404	84.7%	349	84.7%	306	85.5%	278	77.7%
International	1	0.2%	2	0.4%	1	0.2%	3	0.5%	1	0.2%	2	0.4%	5	1.0%	4	0.8%	2	0.5%	6	1.7%	3	0.8%
Unknown	7	1.3%	4	0.7%	2	0.4%	1	0.2%	2	0.4%	15	3.2%	6	1.3%	7	1.5%	5	1.2%	8	2.2%	9	2.5%
Total Headcount	534	100%	550	100%	495	100%	549	100%	457	100%	474	100%	480	100%	477	100%	412	100%	387	100%	358	100%

Source: UMM Institutional Research extract of IRR official fall stix file

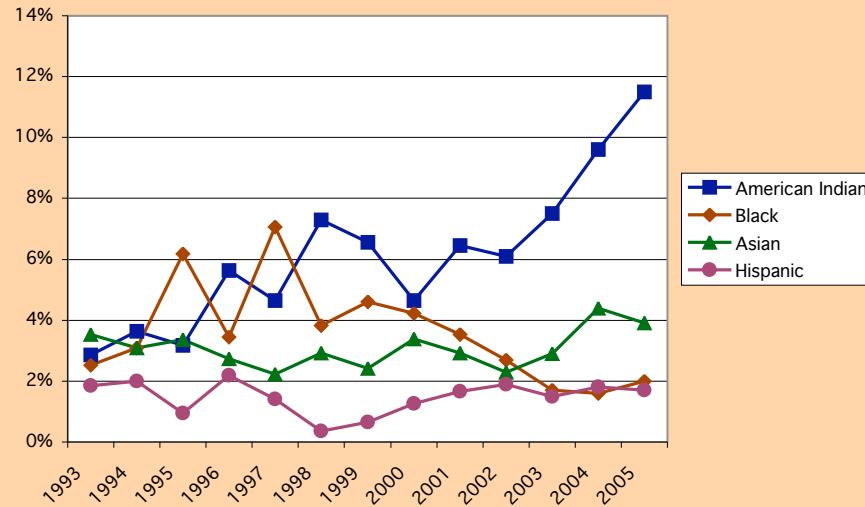
**UMM Students of Color as % of Total Fall Headcount**



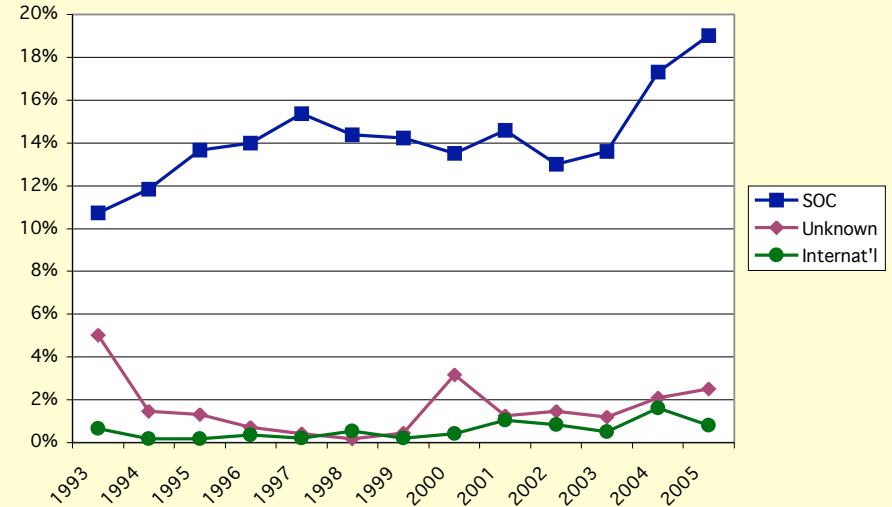
**UMM Students of Color (SOC), International, Unknown Students as % of Total Fall Headcount**



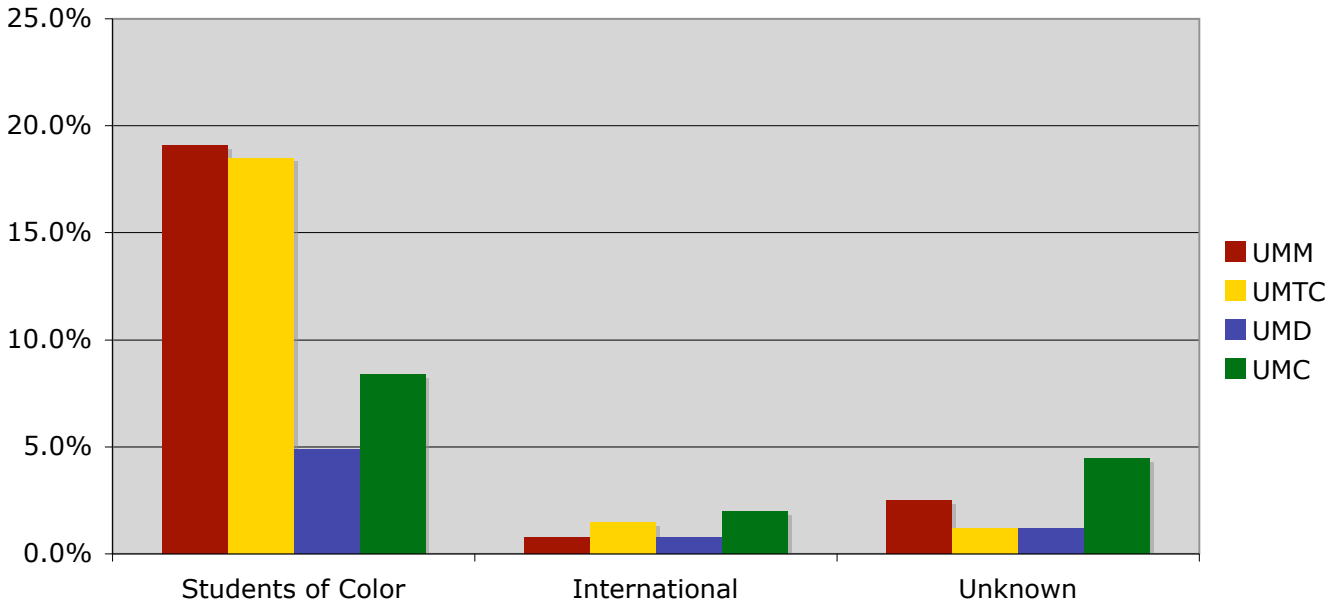
**UMM New High School Fall Freshmen Students of Color**



**UMM New High School Fall Freshmen Students of Color (SOC), International, Unknown Students**

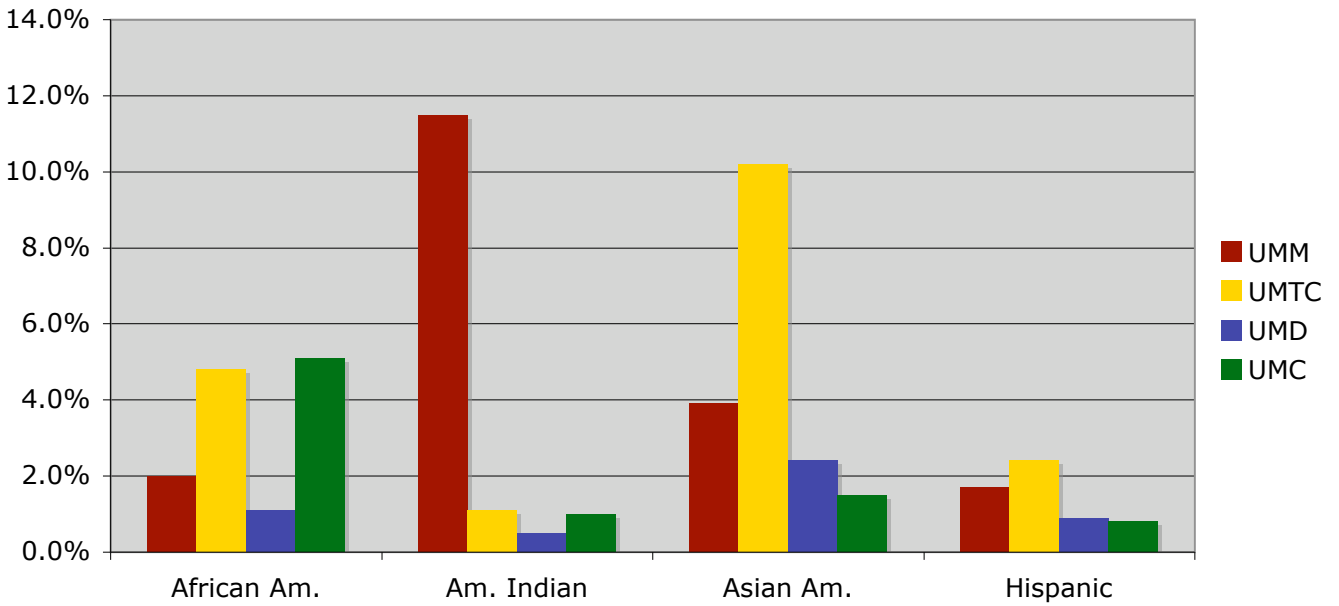


### Ethnic Background Fall 2005 NHS\* Freshmen by U of MN Campus



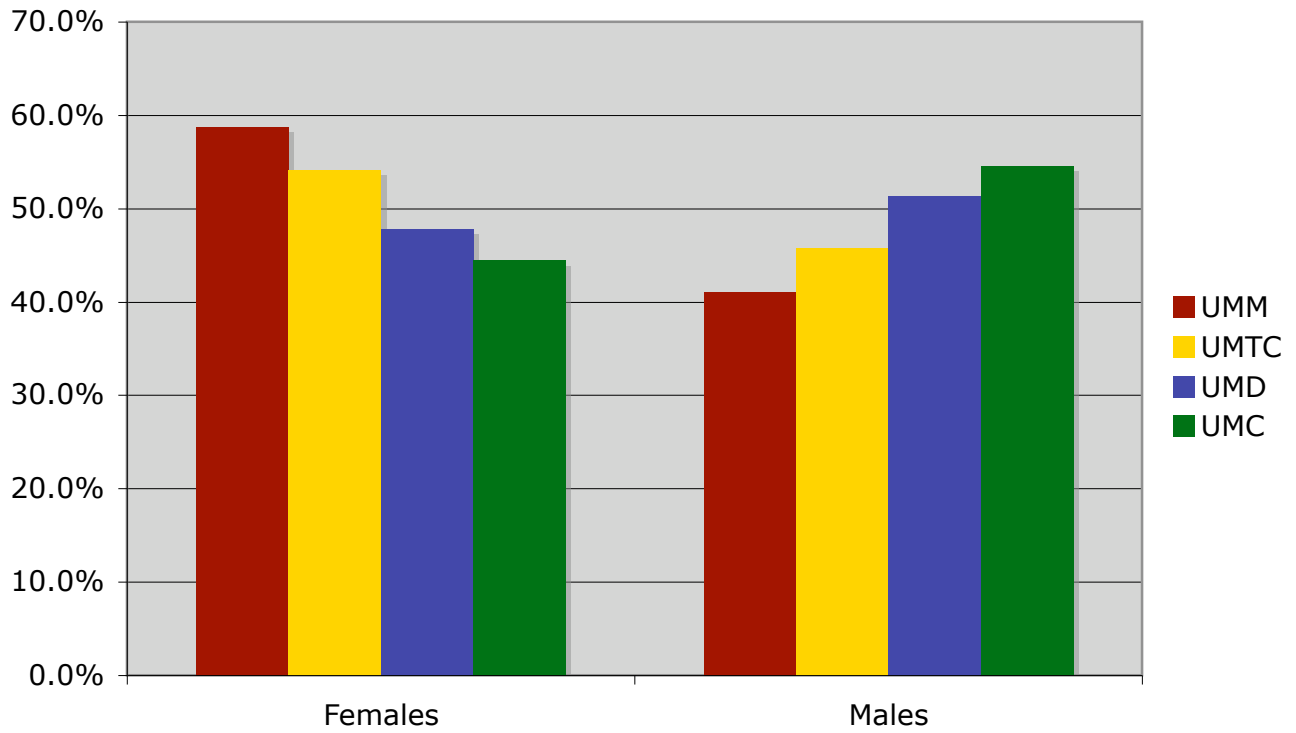
\*NHS=new high school

### Students of Color as Percentage of Fall 2005 NHS\* Freshmen by U of MN Campus



\*NHS=new high school

### Gender Distribution of Fall 2005 NHS\* Freshmen by U of MN Campus



\*NHS=new high school

UMM New Student Characteristics  
Fall 2005

*GLOSSARY*

<u>Term</u>	<u>Definition</u>
AAR Index	= (HSR + 2 x ACTcomp)
ACT	American College Testing Program
ACT Comp	ACT composite score
CLA	College of Liberal Arts on the Twin Cities Campus
DCLA	College of Liberal Arts on the Duluth Campus
HSR	High School Rank
NHS	New high school freshmen
UMC	University of Minnesota, Crookston
UMD	University of Minnesota, Duluth
UMM	University of Minnesota, Morris
UMTC	University of Minnesota, Twin Cities