

University of Minnesota, Morris

**Student Origin Report
Fall 2003**

Tables and Charts

UMM Institutional Research

UMM Fall Student Count by Minnesota County

County	2003*	2002	2001	2000	1999	1998	1997	1996	1995	1994	1993	1992	1991
Aitkin	6	7	9	11	6	8	8	7	7	5	1	1	3
Anoka	69	71	62	66	82	77	88	102	111	97	98	96	83
Becker	11	12	14	16	15	17	17	18	11	15	15	16	21
Beltrami	10	12	11	9	8	14	14	13	16	14	9	9	4
Benton	11	11	11	8	7	10	11	10	8	8	5	3	3
Big Stone	18	17	16	17	11	13	12	12	15	15	14	14	20
Blue Earth	12	8	9	7	7	7	8	9	10	11	6	6	6
Brown	21	26	28	31	24	28	23	25	27	21	21	16	24
Carlton	8	10	10	8	7	8	7	10	10	7	5	4	5
Carver	22	15	23	19	18	17	13	19	19	19	22	28	28
Cass	9	14	9	6	5	8	4	2	2	2	4	10	6
Chippewa	10	9	9	6	7	8	9	6	5	4	7	10	16
Chisago	11	12	10	9	5	8	3	5	7	6	8	10	14
Clay	7	5	4	5	3	9	10	7	5	3	2	3	5
Clearwater	3	5	5	2	2	1	0	1	1	0	0	0	2
Cook	4	0	0	0	0	1	2	3	5	4	5	2	0
Cottonwood	4	4	5	7	9	6	5	6	3	7	9	11	11
Crow Wing	16	24	22	10	18	24	28	26	23	22	16	12	18
Dakota	57	58	57	54	60	58	59	66	61	56	54	51	51
Dodge	3	5	3	3	4	3	4	2	2	2	3	3	1
Douglas	48	51	52	55	52	47	41	40	26	19	25	31	40
Faribault	2	3	6	5	5	7	5	8	9	9	8	8	8
Fillmore	0	1	1	1	1	1	1	4	7	4	3	4	4
Freeborn	5	4	2	4	4	2	4	5	7	7	4	2	4
Goodhue	8	9	6	4	8	8	13	13	12	8	10	12	12
Grant	13	21	24	26	28	27	21	20	16	18	21	19	19
Hennepin	235	225	210	219	200	192	194	203	206	215	243	255	258
Houston	5	5	3	1	1	0	3	4	5	3	1	2	2
Hubbard	3	3	5	4	5	6	2	4	5	8	8	6	5
Isanti	8	6	5	1	2	3	5	6	7	7	8	4	4
Itasca	10	14	10	11	11	14	12	12	8	8	6	5	6
Jackson	2	1	1	0	1	2	4	10	9	9	9	11	11
Kanabec	2	5	2	4	1	1	1	2	2	3	5	6	4
Kandiyohi	33	34	38	36	26	24	25	24	25	27	24	25	28
Kittson	0	0	2	4	5	5	2	1	0	1	2	5	5
Koochiching	2	4	4	3	3	2	2	4	4	2	0	0	0
Lac Qui Parle	6	17	15	17	19	15	11	10	15	12	8	23	29
Lake	5	2	2	2	5	4	4	3	1	0	1	1	1
Lake Of The Woods	3	2	5	5	4	5	4	2	1	2	1	1	0
Le Sueur	16	9	4	5	6	2	10	12	14	14	4	3	5
Lincoln	3	3	4	6	10	7	7	8	9	14	11	6	5
Lyon	12	12	13	12	17	16	16	17	9	10	14	14	15
Mahnomen	4	4	6	7	14	19	11	8	11	8	8	10	5
Marshall	1	0	3	2	5	5	6	5	2	5	4	3	3
Martin	10	16	11	8	11	10	7	9	8	13	13	10	7
McLeod	22	19	21	28	24	24	25	21	18	24	28	27	23
Meeke	24	16	19	15	14	15	17	14	16	15	12	15	16
Mille Lacs	13	8	11	9	7	11	12	12	12	14	14	12	10
Morrison	19	18	19	22	27	26	27	25	23	25	25	22	22
Mower	2	2	3	3	4	3	4	3	5	5	3	5	8
Murray	5	5	7	6	6	5	6	7	10	7	6	6	7
Nicollet	2	1	0	3	3	5	6	9	9	12	10	4	1
Nobles	7	11	10	10	17	16	7	8	9	11	13	17	20
Norman	0	1	3	4	5	7	9	7	7	5	7	5	6
Olmsted	20	17	10	10	9	14	16	15	19	16	14	17	13
Otter Tail	27	32	37	44	40	50	48	43	36	30	34	34	32
Pennington	3	7	4	3	3	1	2	1	1	2	2	2	5
Pine	2	0	0	2	2	3	8	11	8	8	6	3	1
Pipestone	9	15	9	8	12	17	23	22	15	12	9	8	8
Polk	5	7	13	15	14	10	12	11	13	13	10	4	5
Pope	28	20	30	31	28	23	37	28	19	21	15	21	27
Ramsey	121	109	97	100	107	103	97	118	116	128	134	133	140
Red Lake	1	1	1	0	0	2	1	1	1	1	1	0	0
Redwood	14	14	13	8	4	10	10	8	10	11	13	17	19
Renville	13	16	12	12	10	17	16	14	22	18	24	24	26
Rice	9	8	8	6	8	11	12	12	12	10	4	6	11
Rock	6	12	10	10	6	5	8	15	20	15	13	9	9
Roseau	6	8	7	4	4	5	4	4	7	4	2	4	3
Saint Louis	33	35	37	36	31	37	41	49	43	29	35	25	16
Scott	14	12	12	12	11	14	17	17	19	18	16	18	18
Sherburne	21	15	24	21	25	36	25	30	28	26	31	30	30
Sibley	2	5	6	8	7	8	8	16	12	11	15	9	13
Stearns	71	89	90	74	66	71	70	78	65	64	74	74	80
Steele	3	5	8	9	6	6	7	8	12	14	13	12	8
Stevens	65	51	58	62	67	70	59	60	60	56	69	61	70
Swift	15	13	14	21	24	26	26	26	27	27	26	33	34
Todd	16	21	24	21	17	17	16	15	25	20	12	14	18
Traverse	3	2	1	2	5	9	6	7	8	8	9	4	7
Wabasha	1	1	2	4	4	2	0	0	2	2	3	3	2
Wadena	6	6	6	7	6	7	7	9	7	11	14	14	12
Waseca	5	4	2	2	2	4	5	6	5	4	7	8	6
Washington	61	45	51	35	27	35	38	51	58	68	61	59	43
Watsonwan	2	3	3	4	5	5	4	3	2	2	3	6	5
Wilkin	7	10	11	12	8	3	2	0	3	3	4	8	9
Winona	8	10	13	14	8	6	5	7	5	9	8	7	6
Wright	44	60	60	56	63	62	62	57	56	64	55	53	49
Yellow Medicine	14	9	7	15	17	7	10	10	9	12	12	12	15
Total MN Students	1497	1519	1524	1504	1495	1557	1551	1634	1625	1604	1613	1619	1654

*Beginning with Fall 2003 data, Jeri Mullin is no longer creating a VAX database by reviewing paper files. Based on discussions with IRR in the Twin Cities, UMM Institutional Research is using the Home Location Code in the Stix file. Home Location Code is the home county (if in MN), state, or country that the student indicated when first applying to UMM. "International" students are considered to be the "Out of Country" students. No. of high schools is no longer available. Continuing Education students are no longer counted separately.

State	2003*	2002	2001	2000	1999	1998	1997	1996	1995	1994	1993	1992	1991	1990
Alabama-AL	0	1	0	0	0	0	0	0	0	0	2	1	1	0
Alaska-AK	1	2	3	5	4	5	2	3	1	0	0	0	1	1
Arizona-AZ	5	9	9	4	2	3	3	3	4	4	4	2	1	0
Arkansas-AR	0	0	0	0	0	0	0	0	0	0	0	1	1	0
California-CA	12	16	14	6	6	12	13	12	9	4	3	1	3	3
Colorado-CO	9	10	6	3	0	3	3	3	3	3	3	0	1	1
Connecticut-CT	0	0	1	1	1	0	0	0	0	0	0	0	0	0
Delaware-DE	0	0	0	0	0	0	0	0	0	0	0	0	0	0
Dist. Columbia-DC	0	1	1	1	1	1	1	0	0	0	0	0	0	0
Florida-FL	1	2	5	8	9	14	13	9	12	11	10	7	3	0
Georgia-GA	0	1	1	0	0	0	0	0	0	0	1	1	0	0
Hawaii-HI	0	0	0	0	0	0	1	1	1	1	1	1	1	1
Idaho-ID	3	0	0	1	0	0	0	0	0	0	3	0	0	0
Illinois-IL	24	34	50	61	59	58	60	49	54	48	55	53	47	26
Indiana-IN	0	1	3	3	3	4	2	0	0	1	0	0	0	0
Iowa-IA	4	6	6	6	2	1	2	2	1	3	4	2	2	1
Kansas-KS	3	5	2	0	3	1	1	1	1	0	0	0	1	1
Kentucky-KY	0	1	1	0	0	0	0	0	0	0	0	0	0	0
Louisiana-LA	3	4	6	10	11	13	11	11	11	10	6	6	6	6
Maine-ME	0	1	1	1	0	0	0	2	0	0	0	0	0	0
Maryland-MD	1	1	1	0	0	1	1	1	1	0	1	2	1	2
Massachusetts-MA	0	0	1	2	2	0	0	1	1	1	1	2	2	2
Michigan-MI	0	2	3	9	9	6	8	5	5	2	0	2	2	2
Minnesota-MN	1498	1519	1524	1504	1495	1557	1551	1634	1625	1604	1613	1619	1654	1778
Mississippi-MS	0	0	0	0	0	1	0	0	0	0	0	0	0	0
Missouri-MO	1	2	2	2	1	4	4	1	2	3	4	5	3	4
Montana-MT	3	2	2	0	1	1	0	0	1	1	3	3	3	4
Nebraska-NE	5	4	4	4	3	2	0	5	3	2	1	0	0	1
Nevada-NV	1	0	0	0	0	1	1	0	1	1	1	1	1	0
New Hampshire-NH	1	0	0	0	0	0	0	0	0	0	0	0	0	0
New Jersey-NJ	0	0	0	0	0	0	1	1	1	0	1	0	1	0
New Mexico-NM	1	1	1	0	0	0	0	0	0	0	0	0	1	2
New York-NY	2	1	2	1	0	0	3	3	3	5	5	5	3	3
North Carolina-NC	1	2	1	1	1	1	0	0	0	0	0	0	0	0
North Dakota-ND	35	33	44	38	38	30	29	29	22	26	40	37	37	35
Ohio-OH	1	1	2	1	2	2	2	1	0	0	0	1	3	4
Oklahoma-OK	0	0	0	0	1	1	2	3	0	0	2	0	0	0
Oregon-OR	1	0	0	0	0	0	1	1	2	1	0	0	0	0
Pennsylvania-PA	0	0	0	2	3	3	3	1	0	2	2	1	0	0
Rhode Island-RI	0	0	0	0	0	0	0	0	0	0	0	0	0	0
South Carolina-SC	0	0	0	0	0	0	1	1	1	1	0	0	0	0
South Dakota-SD	78	93	84	81	104	115	107	109	105	118	99	107	97	113
Tennessee-TN	0	0	0	1	1	1	1	2	1	0	0	0	0	0
Texas-TX	8	11	14	11	11	10	14	17	11	8	3	3	1	1
Utah-UT	0	0	0	0	0	0	0	0	0	0	0	0	0	0
Vermont-VT	2	0	0	0	0	0	0	0	0	0	0	0	0	0
Virginia-VA	1	1	2	2	1	1	0	0	0	0	0	1	0	0
Virgin Islands-VI	0	0	0	0	0	2	1	2	0	0	0	0	0	0
Washington-WA	4	3	2	4	4	0	1	2	1	0	0	0	0	0
West Virginia-WV	0	0	0	0	0	0	0	0	0	0	0	0	0	0
Wisconsin-WI	48	36	37	41	38	37	32	31	44	43	43	41	20	15
Wyoming-WY	0	2	3	2	2	1	1	1	0	1	1	2	3	2
Foreign	21	25	23	11	13	10	18	24	25	20	21	17	15	15
Unknown	83													
Cont. Ed. Students		77	66	15	24	15	14							
Official Enrollment	1861	1910	1927	1842	1855	1917	1908	1970	1952	1924	1933	1923	1915	2021
Reciprocity States:	2003	2002	2001	2000	1999	1998	1997	1996	1994	1993	1992	1991	1990	
North Dakota	35	33	44	38	38	30	29	29	22	26	40	37	37	35
South Dakota	78	93	84	81	104	115	107	109	105	118	99	107	97	113
Wisconsin	48	36	37	41	38	37	32	31	44	43	43	41	20	15
Totals	161	162	165	160	180	182	168	169	171	187	182	185	154	163
% Total Enrollment	9%	8%	9%	9%	10%	9%	9%	9%	9%	10%	9%	10%	8%	8%
Tri-State Area:	2003	2002	2001	2000	1999	1998	1997	1996	1995	1994	1993	1992	1991	1990
Iowa	4	6	6	6	2	1	2	2	1	3	4	2	2	1
North Dakota	35	33	44	38	38	30	29	29	22	26	40	37	37	35
South Dakota	78	93	84	81	104	115	107	109	105	118	99	107	97	113
Totals	117	132	134	125	144	146	138	140	128	147	143	146	136	149
% Total Enrollment	6%	7%	7%	7%	8%	8%	7%	7%	7%	8%	7%	8%	7%	7%
*Beginning with Fall 2003 data, Jeri Mullin is no longer creating a VAX database by reviewing paper files.														
Based on discussions with IRR in the Twin Cities, UMM Institutional Research is using the Home Location Code in the Stix file.														
Home Location Code is the home county (if in MN), state, or country that the student indicated when first applying to UMM.														
"International" students are considered to be the "Out of Country" students. No. of high schools is no longer available.														

All High School Comparison

University of MN, Morris

	2003*	2002	2001	2000	1999	1998	1997	1996	1995	1994	1993	1992	1991	1990
Total Enrollment	1861	1833	1861	1827	1831	1902	1894	1970	1952	1924	1933	1923	1915	2021
Unknowns	83	+77 UC	+66 UC	+ 15 CCE	+24 UC	+15 UC	+14 UC							
Total Schools Represented	NA	557	582	542	556	572	563	566	560	559	562	540	492	471
Minnesota Origin														
# Of Schools	NA	333	338	325	331	332	330	338	343	332	338	338	326	319
# Of Counties	84	83	84	84	85	86	86	85	86	85	85	84	83	83
# Of Students	1498	1519	1524	1504	1495	1557	1551	1634	1625	1604	1613	1619	1654	1778
% of Enrollment	84%	83%	82%	82%	82%	82%	82%	83%	83%	83%	83%	84%	86%	88%
Out-of-State Origin														
# Of Schools	NA	204	226	210	212	230	217	206	196	208	203	185	151	137
# of States	28	31	32	29	28	29	31	30	28	24	26	25	27	21
# Of Students	259	289	314	312	323	335	325	312	304	300	299	287	246	228
% of Enrollment	15%	16%	17%	17%	18%	18%	17%	16%	16%	16%	15%	15%	13%	11%
Out-of Country Origin														
# Of Schools	NA	20	18	7	13	10	16	22	21	19	21	17	15	15
# Of Countries	14	13	15	8	10	9	14	15	16	13	18	13	10	11
# Of Students	21	25	23	11	13	10	18	24	23	20	21	17	15	15
% of Enrollment	1%	1%	1%	1%	1%	1%	1%	1%	1%	1%	1%	1%	1%	1%
*Beginning with Fall 2003 data, Jeri Mullin is no longer creating a VAX database by reviewing paper files.														
Based on discussions with IRR in the Twin Cities, UMM Institutional Research is using the Home Location Code in the Stix file.														
Home Location Code is the home county (if in MN), state, or country that the student indicated when first applying to UMM.														
Out of Country students are considered to be the "International" students. No. of high schools is no longer available.														

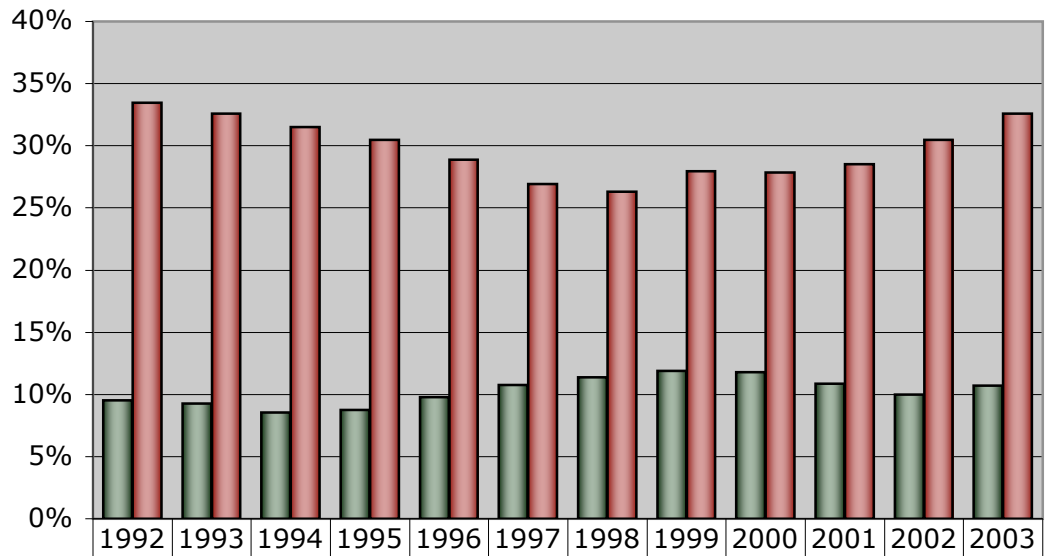
**Student Origin
Surrounding Counties
7-County Metro**

	2003	2002	2001	2000	1999	1998	1997	1996	1995	1994	1993	1992
Surrounding Counties												
Stevens	65	51	58	62	67	70	59	60	60	56	69	61
Douglas	48	51	52	55	52	47	41	40	26	19	25	31
Pope	28	20	30	31	28	23	37	28	19	21	15	21
Big Stone	18	17	16	17	11	13	12	12	15	15	14	14
Swift	15	13	14	21	24	26	26	26	27	27	26	33
Grant	13	21	24	26	28	27	21	20	16	18	21	19
Traverse	3	2	1	2	5	9	6	7	8	8	9	4
TOTAL	190	175	195	214	215	215	202	193	171	164	179	183
7-County Metro Area												
Anoka	69	71	62	66	82	77	88	102	111	97	98	96
Carver	22	15	23	19	18	17	13	19	19	19	22	28
Dakota	57	58	57	54	60	58	59	59	66	61	56	54
Hennepin	235	225	210	219	200	192	194	203	206	215	243	255
Ramsey	121	109	97	100	107	103	97	118	116	128	134	133
Scott	14	12	12	12	11	14	17	17	19	18	16	18
Washington	61	45	51	35	27	35	38	51	58	68	61	59
TOTAL	579	535	512	505	505	496	506	569	595	606	630	643

	Fall 2003		Fall 2002		Fall 2001		Fall 2000		Fall 1999		Fall 1998	
	N	%	N	%	N	%	N	%	N	%	N	%
Total Student Body	1861		1833		1861		1827		1831		1902	
Unknown	83		77		66		15		24		15	
Surrounding Counties	190	11%	175	10%	195	11%	214	12%	215	12%	215	11%
From 7 County Metro Area	579	33%	535	30%	512	29%	505	28%	505	28%	496	26%

	Fall 1997		Fall 1996		Fall 1995		Fall 1994		Fall 1993		Fall 1992	
	N	%	N	%	N	%	N	%	N	%	N	%
Total Student Body	1894		1970		1952		1924		1933		1923	
Unknown	14											
Surrounding Counties	202	11%	193	10%	171	9%	164	9%	179	9%	183	10%
From 7 County Metro Area	506	27%	569	29%	595	30%	606	31%	630	33%	643	33%

University of Minnesota, Morris Origin of Fall Student Body



■ Surrounding Counties	10%	9%	9%	9%	10%	11%	11%	12%	12%	11%	10%	11%
■ 7-County Metro Area	33%	33%	31%	30%	29%	27%	26%	28%	28%	29%	30%	33%

**UMM Student Count Fall 2003:
1861**

Yr of Birth	Age	Count
1945	58	1
1947	56	2
1948	55	1
1953	49	1
1956	47	1
1957	45	3
1958	44	2
1960	43	1
1961	42	2
1962	41	2
1963	39	3
1964	38	1
1965	37	3
1966	36	4
1968	35	1
1969	34	4
1970	33	2
1971	32	2
1972	31	5
1973	30	4
1974	29	5
1975	28	5
1976	27	11
1977	26	13
1978	25	21
1979	24	31
1980	23	62
1981	22	155
1982	21	330
1983	20	359
1984	19	397
1985	18	351
1986	17	64
1987	16	9
1988	15	1
unknown		2
Total Enrollment		1861

Age	Fall 2010		Fall 2009		Fall 2008		Fall 2007		Fall 2006		Fall 2005		Fall 2004		Fall 2003*	
	N	%	N	%	N	%	N	%	N	%	N	%	N	%	N	%
15															1	0.1%
16															9	0.5%
17															64	3.4%
18															351	18.9%
19															397	21.3%
20															359	19.3%
21															330	17.7%
22															155	8.3%
23															62	3.3%
24															31	1.7%
25+															100	5.4%
Unknown															2	0.1%
Total															1861	100.0%
15-20															1180	63.4%
21+															678	36.4%
24+															131	7.0%
25+															100	5.4%

Age	Fall 2002		Fall 2001		Fall 2000		Fall 1999		Fall 1998		Fall 1997		Fall 1996		Fall 1995	
	N	%	N	%	N	%	N	%	N	%	N	%	N	%	N	%
15	0	0.0%	0	0.0%	0	0.0%	0	0.0%	0	0.0%	0	0.0%	1	0.1%		
16	7	0.4%	4	0.2%	5	0.3%	1	0.1%	2	0.1%	2	0.1%	4	0.2%	4	0.2%
17	17	0.9%	23	1.2%	26	1.4%	25	1.4%	23	1.2%	24	1.3%	18	0.9%	15	0.8%
18	279	15.2%	289	15.5%	280	15.3%	273	14.9%	329	17.3%	277	14.6%	340	17.3%	316	16.2%
19	430	23.5%	430	23.1%	418	22.9%	469	25.6%	422	22.2%	482	25.4%	433	22.0%	454	23.3%
20	378	20.6%	375	20.2%	403	22.1%	362	19.8%	410	21.6%	382	20.2%	394	20.0%	430	22.0%
21	322	17.6%	350	18.8%	317	17.4%	363	19.8%	334	17.6%	340	18.0%	368	18.7%	384	19.7%
22	193	10.5%	189	10.2%	189	10.3%	176	9.6%	197	10.4%	198	10.5%	213	10.8%	185	9.5%
23	72	3.9%	67	3.6%	58	3.2%	63	3.4%	60	3.2%	59	3.1%	73	3.7%	55	2.8%
24	39	2.1%	24	1.3%	35	1.9%	18	1.0%	23	1.2%	36	1.9%	27	1.4%	15	0.8%
25+	96	5.2%	110	5.9%	85	4.7%	81	4.4%	102	5.4%	94	5.0%	99	5.0%	94	4.8%
Unknown	0	0.0%	0	0.0%	11	0.6%										
Total	1833	+77 CCE	1861	+66 CCE	1827	+15 CCE	1831	+24 UC	1902	+15 UC	1894	+14 UC	1970		1952	
15-20	1111	60.6%	1121	60.2%	1132	62.0%	1130	61.7%	1186	62.4%	1167	61.6%	1189	60.4%	1219	62.4%
21+	722	39.4%	740	39.8%	684	37.4%	701	38.3%	716	37.6%	727	38.4%	780	39.6%	733	37.6%
24+	135	7.4%	134	7.2%	120	6.6%	99	5.4%	125	6.6%	130	6.9%	126	6.4%	109	5.6%
25+	96	5.2%	110	5.9%	85	4.7%	81	4.4%	102	5.4%	94	5.0%	99	5.0%	94	4.8%

Age	Fall 1995		Fall 1994		Fall 1993		Fall 1992		Fall 1991		Fall 1990		Fall 1989		Fall 1988	
	N	%	N	%	N	%	N	%	N	%	N	%	N	%	N	%
15							0	0.0%	0	0.0%	0	0.0%	0	0.0%	0	0.0%
16	4	0.2%	2	0.1%	2	0.1%	2	0.1%	2	0.1%	0	0.0%	1	0.0%	0	0.0%
17	15	0.8%	16	0.8%	12	0.6%	13	0.7%	9	0.5%	6	0.3%	6	0.3%	1	0.0%
18	316	16.2%	314	16.3%	339	17.5%	360	18.7%	288	15.0%	293	14.5%	340	16.7%	367	18.2%
19	454	23.3%	509	26.5%	534	27.6%	455	23.7%	471	24.6%	493	24.4%	491	24.1%	560	27.7%
20	430	22.0%	442	23.0%	371	19.2%	384	20.0%	426	22.2%	408	20.2%	436	21.4%	408	20.2%
21	384	19.7%	309	16.1%	314	16.2%	351	18.3%	322	16.8%	373	18.5%	344	16.9%	278	13.8%
22	185	9.5%	179	9.3%	195	10.1%	187	9.7%	202	10.5%	225	11.1%	165	8.1%	147	7.3%
23	55	2.8%	55	2.9%	57	2.9%	60	3.1%	74	3.9%	63	3.1%	55	2.7%	45	2.2%
24	15	0.8%	17	0.9%	18	0.9%	20	1.0%	25	1.3%	17	0.8%	21	1.0%	25	1.2%
25+	94	4.8%	81	4.2%	91	4.7%	91	4.7%	96	5.0%	143	7.1%	182	8.9%	190	9.4%
Unknown																
Total	1952		1924		1933		1923		1915		2021		2041		2021	
16-20	1219	62.4%	1283	66.7%	1258	65.1%	1214	63.1%	1196	62.5%	1200	59.4%	1274	62.4%	1336	66.1%
21+	733	37.6%	641	33.3%	675	34.9%	709	36.9%	719	37.5%	821	40.6%	767	37.6%	685	33.9%
24+	109	5.6%	98	5.1%	109	5.6%	111	5.8%	121	6.3%	160	7.9%	203	9.9%	215	10.6%
25+	94	4.8%	81	4.2%	91	4.7%	91	4.7%	96	5.0%	143	7.1%	182	8.9%	190	9.4%

Beginning with Fall 2003 data, Continuing Education students are no longer counted separately.

University of Minnesota, Morris Fall 2003 Student Body by Age

