

University of Minnesota, Morris

**Student Origin Report
Fall 2009**

Tables and Charts

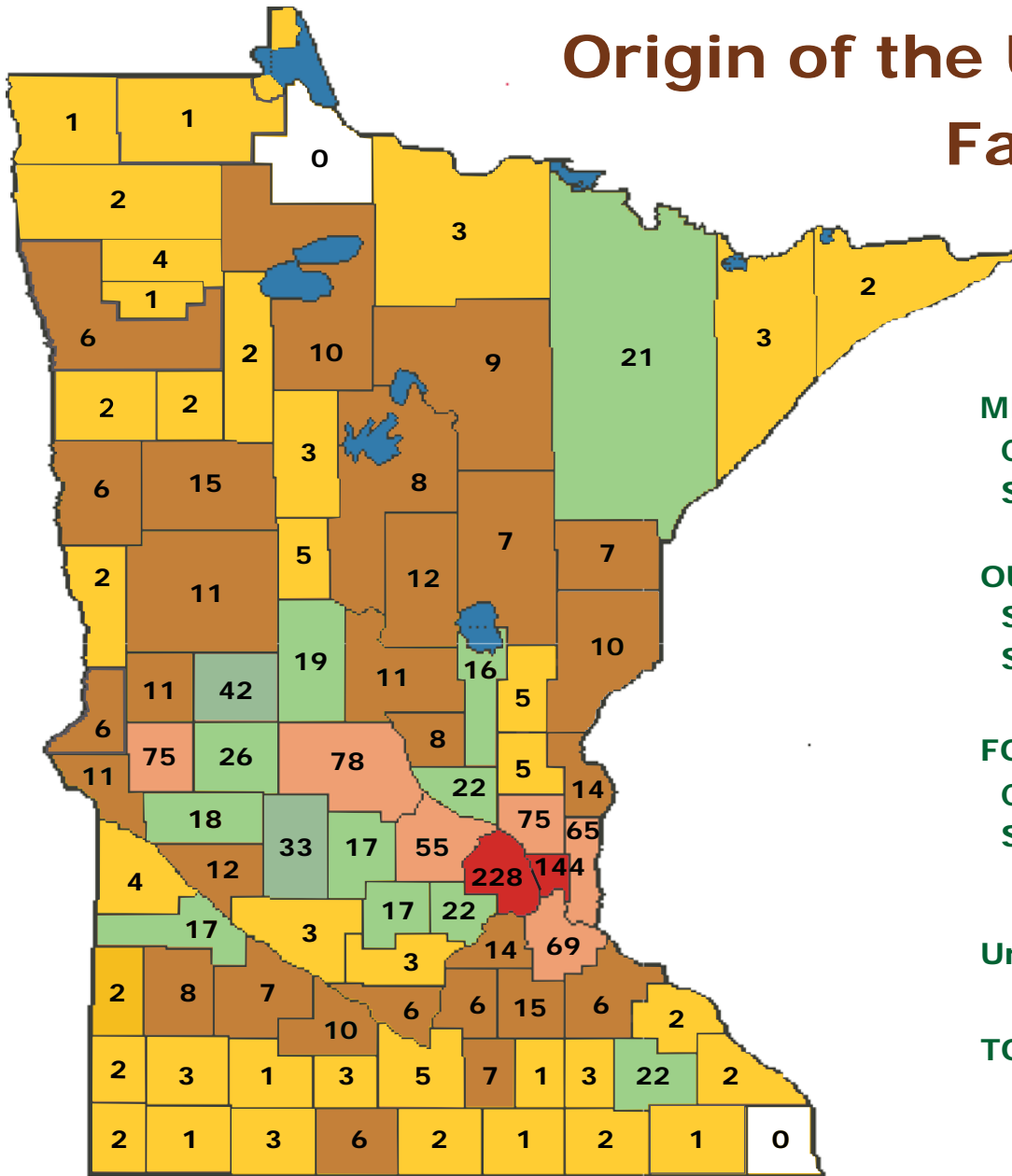
UMM Institutional Research

UMM Student Origin Report
Fall 2009

Table of Contents

<u>Description</u>	<u>Page</u>
Origin of the Fall 2009 Student Body by County (map).	3
Fall Student Count by Minnesota County, 1995-2009 (table). . .	4
Fall Student Count by State, 1995-2009 (table).	5
Percentage of Students with Minnesota, Out-of-State, and Out-of-Country Origins, 1995-2009 (table).	6
No. of Students from Surrounding Counties and the 7-County Metro Area, 1992-2009 (table).	7
Percentage of Students from Surrounding Counties and 7-County Metro Area, 1992-2009 (table).	8
Percentage of Students from Surrounding Counties and 7-County Metro Area, 1997-2009 (chart).	9
Fall 2009 Student Count by Year of Birth (table).	10
Fall Semester Student Count by Age, 1987-2009 (table).	11
Student Count by Age, Fall 2007-2009 (chart).	12

Origin of the UMM Student Body Fall 2009



MINNESOTA			
Counties	85		
Students	1,434	(84%)	
OUT-OF-STATE			
States	32		
Students	187	(11%)	
FOREIGN			
Countries	16		
Students	74	(4%)	
Unknowns			
	10		
TOTAL STUDENTS	1,705		

UMM Fall Student Count by Minnesota County

County	1995	1996	1997	1998	1999	2000	2001	2002	2003*	2004	2005	2006	2007	2008	2009
Aitkin	7	7	8	8	6	11	9	7	6	4	5	2	5	4	7
Anoka	111	102	88	77	82	66	62	71	69	73	74	84	76	78	75
Becker	11	18	17	17	15	16	14	12	11	10	6	8	7	8	15
Beltrami	16	13	14	14	8	9	11	12	10	6	9	9	9	8	10
Benton	8	10	11	10	7	8	11	11	11	9	9	8	7	6	8
Big Stone	15	12	12	13	11	17	16	17	18	8	7	3	7	7	11
Blue Earth	10	9	8	7	7	7	9	8	12	13	12	11	6	6	5
Brown	27	25	23	28	24	31	28	26	21	22	20	14	13	10	10
Carlton	10	10	7	8	7	8	10	10	8	6	3	5	4	7	7
Carver	19	19	13	17	18	19	23	15	22	24	16	17	14	20	22
Cass	2	2	4	8	5	6	9	14	9	9	9	8	8	7	8
Chippewa	5	6	9	8	7	6	9	9	10	11	9	9	5	6	12
Chisago	7	5	3	8	5	9	10	12	11	10	11	11	12	9	14
Clay	5	7	10	9	3	5	4	5	7	7	5	8	6	7	6
Clearwater	1	1	0	1	2	2	5	5	3	2	3	3	2	2	2
Cook	5	3	2	1	0	0	0	0	4	3	4	1	2	3	2
Cottonwood	3	6	5	6	9	7	5	4	4	4	5	7	6	1	1
Crow Wing	23	26	28	24	18	10	22	24	16	14	12	11	10	7	12
Dakota	66	59	59	58	60	54	57	58	57	71	64	69	65	57	69
Dodge	2	2	4	3	4	3	3	5	3	2	2	0	1	2	3
Douglas	26	40	41	47	52	55	52	51	48	37	31	24	26	38	42
Faribault	9	8	5	7	5	5	6	3	2	4	6	5	3	5	2
Fillmore	7	4	1	1	1	1	1	1	0	1	0	0	1	3	1
Freeborn	7	5	4	2	4	4	2	4	5	4	3	3	2	1	1
Goodhue	12	13	13	8	8	4	6	9	8	9	4	5	4	2	6
Grant	16	20	21	27	28	26	24	21	13	11	9	14	10	12	11
Hennepin	206	203	194	192	200	219	210	225	235	233	244	245	243	215	228
Houston	5	4	3	0	1	1	3	5	5	6	2	1	0	0	0
Hubbard	5	4	2	6	5	4	5	3	3	4	5	2	1	0	3
Isanti	7	6	5	3	2	1	5	6	8	8	6	4	1	5	7
Itasca	8	12	12	14	11	11	10	14	10	8	6	2	4	6	9
Jackson	9	10	4	2	1	0	1	1	2	2	0	1	3	3	3
Kanabec	2	2	1	1	1	4	2	5	2	3	2	3	3	3	5
Kandiyohi	25	24	25	24	26	36	38	34	33	27	25	24	24	29	33
Kittson	0	1	2	5	5	4	2	0	0	1	1	2	2	0	1
Koochiching	4	4	2	2	3	3	4	4	2	4	4	4	4	5	3
Lac Qui Parle	15	10	11	15	19	17	15	17	6	4	4	4	6	2	4
Lake	1	3	4	4	5	2	2	2	5	6	1	0	1	3	3
Lake of the Woods	1	2	4	5	4	5	5	2	3	3	3	2	0	0	0
Le Sueur	14	12	10	2	6	5	4	9	16	18	17	19	15	8	6
Lincoln	9	8	7	7	10	6	4	3	3	3	3	3	1	2	2
Lyon	9	17	16	16	17	12	13	12	12	13	10	8	6	8	8
Mahnomen	11	8	11	19	14	7	6	4	4	3	4	3	2	2	2
Marshall	2	5	6	5	5	2	3	0	1	1	3	4	2	4	2
Martin	8	9	7	10	11	8	11	16	10	7	6	6	4	6	6
Mcleod	18	21	25	24	24	28	21	19	22	20	20	17	17	18	17
Meeker	16	14	17	15	14	15	19	16	24	18	12	11	9	10	17
Mille Lacs	12	12	12	11	7	9	11	8	13	10	9	7	11	13	16
Morrison	23	25	27	26	27	22	19	18	19	17	20	20	17	15	11
Mower	5	3	4	3	4	3	3	2	2	3	1	3	3	3	2
Murray	10	7	6	5	6	6	7	5	5	2	0	0	0	2	3
Nicollet	9	9	6	5	3	3	0	1	2	1	6	6	6	9	6
Nobles	9	8	7	16	17	10	10	11	7	6	3	1	1	0	1
Norman	7	7	9	7	5	4	3	1	0	0	2	1	2	2	2
Olmsted	19	15	16	14	9	10	10	17	20	24	21	21	26	21	22
Otter Tail	36	43	48	50	40	44	37	32	27	33	27	21	15	14	11
Pennington	1	1	2	1	3	3	4	7	3	4	3	4	4	4	4
Pine	8	11	8	3	2	2	0	0	2	3	4	5	5	6	10
Pipestone	15	22	23	17	12	8	9	15	9	7	4	2	0	0	2
Polk	13	11	12	10	14	15	13	7	5	6	5	4	5	4	6
Pope	19	28	37	23	28	31	30	20	28	27	17	24	28	24	26
Ramsey	116	118	97	103	107	100	97	109	121	132	127	133	124	137	144
Red Lake	1	1	1	2	0	0	1	1	1	1	1	1	0	1	1
Redwood	10	8	10	10	4	8	13	14	14	14	9	10	10	10	7
Renville	22	14	16	17	10	12	12	16	13	12	12	9	9	6	3
Rice	12	12	12	11	8	6	8	8	9	8	9	14	12	11	15
Rock	20	15	8	5	6	10	10	12	6	2	0	0	1	3	2
Roseau	7	4	4	5	4	4	7	8	6	6	2	3	1	2	1
Saint Louis	43	49	41	37	31	36	37	35	33	36	32	32	31	20	21
Scott	19	17	17	14	11	12	12	12	14	12	11	12	11	13	14
Sherburne	28	30	25	36	25	21	24	15	21	21	15	20	22	22	25
Sibley	12	16	8	8	7	8	6	5	2	6	4	2	2	1	3
Stearns	65	78	70	71	66	74	90	89	71	76	50	50	64	57	78
Steele	12	8	7	6	6	9	8	5	3	4	3	2	3	3	1
Stevens	60	60	59	70	67	62	58	51	65	67	70	77	71	74	75
Swift	27	26	26	26	24	21	14	13	15	19	16	20	17	13	18
Todd	25	15	16	17	17	21	24	21	16	16	14	13	22	20	19
Traverse	8	7	6	9	5	2	1	2	3	7	3	2	3	4	6
Wabasha	2	0	0	2	4	4	2	1	1	2	1	1	1	2	2
Wadena	7	9	7	7	6	7	6	6	6	7	6	9	5	3	5
Waseca	5	6	5	4	2	2	2	4	5	2	3	7	7	8	7
Washington	58	51	38	35	27	35	51	45	61	61	60	62	65	62	65
Watonwan	2	3	4	5	5	4	3	3	2	3	4	2	3	3	3
Wilkin	3	0	2	3	8	12	11	10	7	3	2	2	2	1	2
Winona	5	7	5	6	8	14	13	10	8	6	7	8	6	3	2
Wright	56	57	62	62	63	56	60	60	44	49	50	60	64	58	55
Yellow Medicine	9	10	10	7	17	15	7	9	14	14	14	16	13	13	17
Unknown County									1	1	1				
Total MN Students	1625	1634	1551	1557	1495	1504	1524	1519	1498	1496	1364	1390	1351	1312	1434

*Beginning with Fall 2003 data, Jeri Mullin is no longer creating a VAX database by reviewing paper files. Based on discussions with IRR in the Twin Cities, UMM Institutional Research is using the Home Location Code in the Stix file. Home Location Code is the home county (if in MN), state, or country that the student indicated when first applying to UMM. "International" students are considered to be the "Out of Country" students. No. of high schools is no longer available. Continuing Education students are no longer counted separately.

UMM Fall Student Count by State

State	1995	1996	1997	1998	1999	2000	2001	2002	2003*	2004	2005	2006	2007	2008	2009
Alabama-AL	0	0		0	0	0	0	1	0	0	0	0	0	0	0
Alaska-AK	1	3	2	5	4	5	3	2	1	2	0	2	5	4	3
Arizona-AZ	4	3	3	3	2	4	9	9	5	1	0	3	2	2	4
Arkansas-AR	0	0		0	0	0	0	0	0	0	1	1	0	0	0
California-CA	9	12	13	12	6	6	14	16	12	6	4	5	2	3	4
Colorado-CO	3	3	3	3	0	3	6	10	9	5	7	8	5	8	7
Connecticut-CT	0	0		0	1	1	1	0	0	0	0	0	0	0	0
Delaware-DE	0	0		0	0	0	0	0	0	0	0	0	0	0	0
Dist. Columbia-DC	0	0	1	1	1	1	1	1	0	0	0	0	0	0	0
Florida-FL	12	9	13	14	9	8	5	2	1	2	2	4	4	2	2
Georgia-GA	0	0		0	0	0	1	1	0	0	0	0	0	1	2
Hawaii-HI	1	1	1	0	0	0	0	0	0	1	1	1	0	0	0
Idaho-ID	0	0		0	0	1	0	0	3	1	0	1	1	1	2
Illinois-IL	54	49	60	58	59	61	50	34	24	19	13	11	11	11	8
Indiana-IN	0	0	2	4	3	3	1	0	0	0	0	0	0	1	1
Iowa-IA	1	2	2	1	2	6	6	6	4	4	7	6	6	5	2
Kansas-KS	1	1	1	1	3	0	2	5	3	2	1	1	1	1	1
Kentucky-KY	0	0		0	0	0	1	1	0	0	2	2	3	2	0
Louisiana-LA	11	11	11	13	11	10	6	4	3	1	0	0	1	1	1
Maine-ME	0	2		0	0	1	1	1	0	1	1	1	2	1	2
Maryland-MD	1	1	1	1	0	0	1	1	1	2	0	0	0	0	1
Massachusetts-MA	1	0		0	2	2	1	0	0	0	0	1	2	2	3
Michigan-MI	5	5	8	6	9	9	3	2	0	0	0	1	2	3	3
Minnesota-MN	1625	1634	1551	1557	1495	1504	1524	1519	1498	1496	1364	1390	1351	1312	1434
Mississippi-MS	0	0		1	0	0	0	0	0	0	0	0	0	0	0
Missouri-MO	2	1	4	4	1	2	2	2	1	1	1	1	1	2	1
Montana-MT	1	0		1	1	0	2	2	3	4	5	9	5	8	8
Nebraska-NE	3	5		2	3	4	4	4	5	3	1	1	1	0	1
Nevada-NV	1	0	1	1	0	0	0	0	1	1	1	1	1	2	1
New Hampshire-NH	0	0		0	0	0	0	0	1	1	0	0	0	0	0
New Jersey-NJ	1	1	1	0	0	0	0	0	0	0	2	0	0	2	1
New Mexico-NM	0	0		0	0	0	1	1	1	0	0	1	1	1	0
New York-NY	3	3	3	0	0	1	2	1	2	0	0	0	0	0	1
North Carolina-NC	0	0		1	1	1	1	2	1	1	0	0	0	0	0
North Dakota-ND	22	29	29	30	38	38	44	33	35	28	24	24	26	18	18
Ohio-OH	0	1	2	2	2	1	2	1	1	0	0	0	0	2	2
Oklahoma-OK	0	3	2	1	1	0	0	0	0	0	0	0	0	0	2
Oregon-OR	2	1	1	0	0	0	0	0	1	0	0	0	0	0	0
Pennsylvania-PA	0	1	3	3	3	2	0	0	0	0	1	1	0	0	0
Rhode Island-RI	0	0		0	0	0	0	0	0	0	0	0	0	0	0
South Carolina-SC	1	1	1	0	0	0	0	0	0	0	0	0	0	0	0
South Dakota-SD	105	109	107	115	104	81	84	93	78	77	68	65	50	47	52
Tennessee-TN	1	2	1	1	1	1	0	0	0	0	1	1	0	0	0
Texas-TX	11	17	14	10	11	11	14	11	8	4	6	6	7	10	11
Utah-UT	0	0		0	0	0	0	0	0	0	0	0	0	0	1
Vermont-VT	0	0		0	0	0	0	0	2	1	1	1	0	0	1
Virginia-VA	0	0		1	1	2	2	1	1	0	1	1	0	1	1
Virgin Islands-VI	0	2	1	2	0	0	0	0	0	0	0	0	0	0	0
Washington-WA	1	2	1	0	4	4	2	3	4	3	2	1	2	2	1
West Virginia-WV	0	0		0	0	0	0	0	0	0	0	0	0	0	0
Wisconsin-WI	44	31	32	37	38	41	37	36	48	55	52	47	58	39	39
Wyoming-WY	0	1	1	1	2	2	3	2	0	0	0	0	0	0	0
Foreign	25	24	18	10	13	11	23	25	21	22	19	30	46	58	74
Unknown									83	95	98	117	90	55	10
Cont. Ed. Students			14	15	24	15	66	77							
Official Enrollment	1952	1970	1908	1917	1855	1842	1927	1910	1861	1839	1684	1747	1686	1607	1705

Reciprocity States:	1994	1996	1997	1998	1999	2000	2001	2002	2003	2004	2005	2006	2007	2008	2009
North Dakota	22	29	29	30	38	38	44	33	35	28	24	24	26	18	18
South Dakota	105	109	107	115	104	81	84	93	78	77	68	65	50	47	52
Wisconsin	44	31	32	37	38	41	37	36	48	55	52	47	58	39	39
Totals	171	169	168	182	180	160	165	162	161	160	144	136	134	104	109
% Total Enrollment	9%	9%	9%	9%	10%	9%	9%	8%	9%	9%	9%	8%	8%	6%	6%

Tri-State Area:	1995	1996	1997	1998	1999	2000	2001	2002	2003	2004	2005	2006	2007	2008	2009
Iowa	1	2	2	1	2	6	6	6	4	4	7	6	6	5	2
North Dakota	22	29	29	30	38	38	44	33	35	28	24	24	26	18	18
South Dakota	105	109	107	115	104	81	84	93	78	77	68	65	50	47	52
Totals	128	140	138	146	144	125	134	132	117	109	99	95	82	70	90
% Total Enrollment	7%	7%	7%	8%	8%	7%	7%	7%	6%	6%	6%	5%	5%	4%	5%

*Beginning with Fall 2003 data, Jeri Mullin is no longer creating a VAX database by reviewing paper files. Based on discussions with IRR in the Twin Cities, UMM Institutional Research is using the Home Location Code in the Stix file. Home Location Code is the home county (if in MN), state, or country that the student indicated when first applying to UMM. "International" students are considered to be the "Out of Country" students. No. of high schools is no longer available. Continuing Education students are no longer counted separately.

	1995	1996	1997	1998	1999	2000	2001	2002	2003*	2004	2005	2006	2007	2008	2009
Total Enrollment	1952	1970	1894	1902	1831	1827	1861	1833	1861	1839	1684	1747	1686	1607	1705
Unknown Origin			+14 UC	+15 UC	+24 UC	+ 15 CCE	+66 UC	+77 UC	83	95	98	117	90	55	10
Total Schools Represented	560	566	563	572	556	542	582	557	NA	NA	NA	NA	NA	NA	NA
Minnesota Origin															
# Of Schools	343	338	330	332	331	325	338	333	NA	NA	NA	NA	NA	NA	NA
# Of Counties (87 total)	86	85	86	86	85	84	84	83	84	86	83	82	82	81	85
# Of Students	1625	1634	1551	1557	1495	1504	1524	1519	1498	1496	1364	1390	1351	1312	1434
% of Enrollment	83%	83%	82%	82%	82%	82%	82%	83%	84%	86%	86%	85%	85%	85%	85%
Out-of-State Origin															
# Of Schools	196	206	217	230	212	210	226	204	NA	NA	NA	NA	NA	NA	NA
# of States	28	30	31	29	28	29	32	31	28	27	23	30	23	28	32
# Of Students	304	312	325	335	323	312	314	289	259	226	203	210	199	182	187
% of Enrollment	16%	16%	17%	18%	18%	17%	17%	16%	15%	13%	13%	13%	12%	12%	11%
Out-of Country Origin															
# Of Schools	21	22	16	10	13	7	18	20	NA	NA	NA	NA	NA	NA	NA
# Of Countries	16	15	14	9	10	8	15	13	14	14	10	13	14	14	16
# Of Students	23	24	18	10	13	11	23	25	21	22	19	30	46	58	74
% of Enrollment	1%	1%	1%	1%	1%	1%	1%	1%	1%	1%	1%	2%	3%	4%	4%

*Beginning with Fall 2003 data, Jeri Mullin is no longer creating a VAX database by reviewing paper files. Based on discussions with IRR in the Twin Cities, UMM Institutional Research is using the Home Location Code in the Stix file. Home Location Code is the home county (if in MN), state, or country that the student indicated when first applying to UMM. Out of Country students are considered to be the "International" students. No. of high schools is no longer available.

**Student Origin
Surrounding Counties
7-County Metro**

University of MN, Morris

	1995	1996	1997	1998	1999	2000	2001	2002	2003	2004	2005	2006	2007	2008	2009
Surrounding Counties															
Stevens	60	60	59	70	67	62	58	51	65	67	70	77	71	74	75
Douglas	26	40	41	47	52	55	52	51	48	37	31	24	26	38	42
Pope	19	28	37	23	28	31	30	20	28	27	17	24	28	24	26
Big Stone	15	12	12	13	11	17	16	17	18	8	7	3	7	7	11
Swift	27	26	26	26	24	21	14	13	15	19	16	20	17	13	18
Grant	16	20	21	27	28	26	24	21	13	11	9	14	10	12	11
Traverse	8	7	6	9	5	2	1	2	3	7	3	2	3	4	6
TOTAL	171	193	202	215	215	214	195	175	190	176	153	164	162	172	189
7-County Metro Area															
Anoka	111	102	88	77	82	66	62	71	69	73	74	84	76	78	75
Carver	19	19	13	17	18	19	23	15	22	24	16	17	14	20	22
Dakota	66	59	59	58	60	54	57	58	57	71	64	69	65	57	69
Hennepin	206	203	194	192	200	219	210	225	235	233	244	245	243	215	228
Ramsey	116	118	97	103	107	100	97	109	121	132	127	133	124	137	144
Scott	19	17	17	14	11	12	12	12	14	12	11	12	11	13	14
Washington	58	51	38	35	27	35	51	45	61	61	60	62	65	62	65
TOTAL	595	569	506	496	505	505	512	535	579	606	596	622	598	582	617

UMM Institutional Research

Origin of the Student Body: Surrounding Counties, 7-County Metro Area

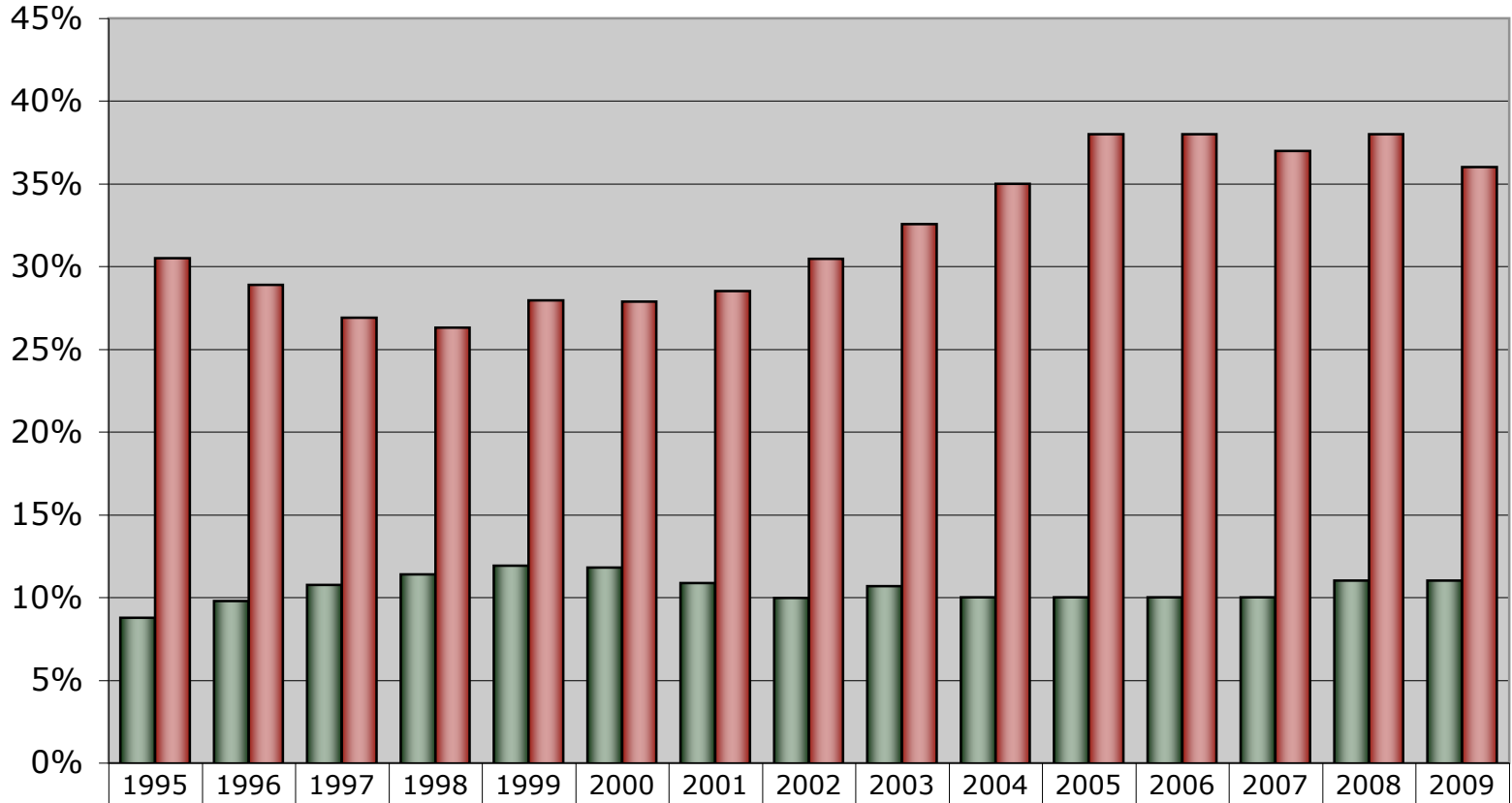
	Fall 2004		Fall 2005		Fall 2006		Fall 2007		Fall 2008		Fall 2009	
	N	%	N	%	N	%	N	%	N	%	N	%
Total Student Body	1839		1684		1747		1686		1607		1705	
Unknown	95		98		117		90		55		10	
Surrounding Counties	176	10%	153	10%	164	10%	162	10%	172	11%	189	11%
From 7 County Metro Area	606	35%	596	38%	622	38%	598	37%	582	38%	617	36%

	Fall 1998		Fall 1999		Fall 2000		Fall 2001		Fall 2002		Fall 2003	
	N	%	N	%	N	%	N	%	N	%	N	%
Total Student Body	1902		1831		1827		1861		1833		1861	
Unknown	15		24		15		66		77		83	
Surrounding Counties	215	11%	215	12%	214	12%	195	11%	175	10%	190	11%
From 7 County Metro Area	496	26%	505	28%	505	28%	512	29%	535	30%	579	33%

	Fall 1992		Fall 1993		Fall 1994		Fall 1995		Fall 1996		Fall 1997	
	N	%	N	%	N	%	N	%	N	%	N	%
Total Student Body	1923		1933		1924		1952		1970		1894	
Unknown											14	
Surrounding Counties	183	10%	179	9%	164	9%	171	9%	193	10%	202	11%
From 7 County Metro Area	643	33%	630	33%	606	31%	595	30%	569	29%	506	27%

UMM Institutional Research

University of Minnesota, Morris Origin of Fall Student Body



■ Surrounding Counties	9%	10%	11%	11%	12%	12%	11%	10%	11%	10%	10%	10%	10%	11%	11%
■ 7-County Metro Area	30%	29%	27%	26%	28%	28%	29%	30%	33%	35%	38%	38%	37%	38%	36%

**UMM Student Count Fall 2009:
1,705**

Yr of Birth	Age	Count
1994	14	1
1993	16	11
1992	16-17	39
1991	17-18	235
1990	18-19	386
1989	19-20	354
1988	20-21	309
1987	21-22	172
1986	22-23	55
1985	23-24	26
1984	24-25	21
1983	25-26	13
1982	26-27	11
1981	27-28	13
1980	28-29	7
1979	29-30	6
1978	30-31	9
1977	32	2
1976	33	0
1975	34	2
1974	34-35	2
1973	36	3
1972	36-37	2
1971	38	0
1970	39	2
1969	40	1
1968	41	7
1967	41-42	2
1966	43	2
1965	43-44	2
1964	45	0
1963	46	3
1962	46	1
1961	47	2
1960	48	0
1959	49	0
1958	50	1
1956	53	1
1955	54	1
1932	76	1
unknown		0
Total Enrollment		1,705

Ages	Percentage
Under 18	3.5%
18-19	41.8%
20-21	36.6%
22-24	11.6%
25-29	3.6%
30-34	1.1%
35-39	0.5%
40-49	1.2%
50-64	0.2%
65 and over	0.1%
	100.0%

Age	Fall 2003*		Fall 2004		Fall 2005		Fall 2006		Fall 2007		Fall 2008		Fall 2009		Fall 2010	
	N	%	N	%	N	%	N	%	N	%	N	%	N	%	N	%
<=15	1	0.1%	1	0.1%	0	0.0%	2	0.1%	0	0.0%	0	0.0%	1	0.1%		
16	9	0.5%	5	0.3%	8	0.5%	18	1.0%	11	0.7%	17	1.1%	14	0.8%		
17	64	3.4%	76	4.1%	45	2.7%	63	3.6%	50	3.0%	50	3.1%	45	2.6%		
18	351	18.9%	309	16.8%	308	18.3%	318	18.2%	306	18.1%	329	20.5%	344	20.2%		
19	397	21.3%	371	20.2%	331	19.7%	341	19.5%	349	20.7%	335	20.8%	369	21.6%		
20	359	19.3%	384	20.9%	335	19.9%	322	18.4%	320	19.0%	323	20.1%	334	19.6%		
21	330	17.7%	339	18.4%	320	19.0%	326	18.7%	297	17.6%	289	18.0%	290	17.0%		
22	155	8.3%	175	9.5%	152	9.0%	165	9.4%	173	10.3%	102	6.3%	137	8.0%		
23	62	3.3%	44	2.4%	62	3.7%	51	2.9%	56	3.3%	39	2.4%	34	2.0%		
24	31	1.7%	34	1.8%	21	1.2%	25	1.4%	19	1.1%	23	1.4%	26	1.5%		
25+	100	5.4%	101	5.5%	102	6.1%	115	6.6%	103	6.1%	100	6.2%	111	6.5%		
Unknown	2	0.1%	0	0.0%	0	0.0%	1	0.1%	2	0.1%	0	0.0%	0	0.0%		
Total	1861	100.0%	1839	100.0%	1684	100.0%	1747	100.0%	1686	100.0%	1607	100.0%	1705	100.0%		
<=20	1181	63.5%	1146	62.3%	1027	61.0%	1064	60.9%	1036	61.4%	1054	65.6%	1107	64.9%		
21+	678	36.4%	693	37.7%	657	39.0%	682	39.0%	648	38.4%	553	34.4%	598	35.1%		
24+	131	7.0%	135	7.3%	123	7.3%	140	8.0%	122	7.2%	123	7.7%	137	8.0%		
25+	100	5.4%	101	5.5%	102	6.1%	115	6.6%	103	6.1%	100	6.2%	111	6.5%		

Age	Fall 1995		Fall 1996		Fall 1997		Fall 1998		Fall 1999		Fall 2000		Fall 2001		Fall 2002	
	N	%	N	%	N	%	N	%	N	%	N	%	N	%	N	%
<=15					0	0.0%	0	0.0%	0	0.0%	0	0.0%	0	0.0%	0	0.0%
16	4	0.2%	4	0.2%	2	0.1%	2	0.1%	1	0.1%	5	0.3%	4	0.2%	7	0.4%
17	15	0.8%	18	0.9%	24	1.3%	23	1.2%	25	1.4%	26	1.4%	23	1.2%	17	0.9%
18	316	16.2%	340	17.3%	277	14.6%	329	17.3%	273	14.9%	280	15.3%	289	15.5%	279	15.2%
19	454	23.3%	433	22.0%	482	25.4%	422	22.2%	469	25.6%	418	22.9%	430	23.1%	430	23.5%
20	430	22.0%	394	20.0%	382	20.2%	410	21.6%	362	19.8%	403	22.1%	375	20.2%	378	20.6%
21	384	19.7%	368	18.7%	340	18.0%	334	17.6%	363	19.8%	317	17.4%	350	18.8%	322	17.6%
22	185	9.5%	213	10.8%	198	10.5%	197	10.4%	176	9.6%	189	10.3%	189	10.2%	193	10.5%
23	55	2.8%	73	3.7%	59	3.1%	60	3.2%	63	3.4%	58	3.2%	67	3.6%	72	3.9%
24	15	0.8%	27	1.4%	36	1.9%	23	1.2%	18	1.0%	35	1.9%	24	1.3%	39	2.1%
25+	94	4.8%	99	5.0%	94	5.0%	102	5.4%	81	4.4%	85	4.7%	110	5.9%	96	5.2%
Unknown											11	0.6%	0	0.0%	0	0.0%
Total	1952		1970		1894	+14 UC	1902	+15 UC	1831	+24 UC	1827	+15 CCE	1861	+66 CCE	1833	+77 CCE
<=20	1219	62.4%	1189	60.4%	1167	61.6%	1186	62.4%	1130	61.7%	1132	62.0%	1121	60.2%	1111	60.6%
21+	733	37.6%	780	39.6%	727	38.4%	716	37.6%	701	38.3%	684	37.4%	740	39.8%	722	39.4%
24+	109	5.6%	126	6.4%	130	6.9%	125	6.6%	99	5.4%	120	6.6%	134	7.2%	135	7.4%
25+	94	4.8%	99	5.0%	94	5.0%	102	5.4%	81	4.4%	85	4.7%	110	5.9%	96	5.2%

Age	Fall 1987		Fall 1988		Fall 1989		Fall 1990		Fall 1991		Fall 1992		Fall 1993		Fall 1994	
	N	%	N	%	N	%	N	%	N	%	N	%	N	%	N	%
<=15	0	0.0%	0	0.0%	0	0.0%	0	0.0%	0	0.0%	0	0.0%				
16	0	0.0%	0	0.0%	1	0.0%	0	0.0%	2	0.1%	2	0.1%	2	0.1%	2	0.1%
17	8	0.4%	1	0.0%	6	0.3%	6	0.3%	9	0.5%	13	0.7%	12	0.6%	16	0.8%
18	401	20.4%	367	18.2%	340	16.7%	293	14.5%	288	15.0%	360	18.7%	339	17.5%	314	16.3%
19	505	25.7%	560	27.7%	491	24.1%	493	24.4%	471	24.6%	455	23.7%	534	27.6%	509	26.5%
20	333	16.9%	408	20.2%	436	21.4%	408	20.2%	426	22.2%	384	20.0%	371	19.2%	442	23.0%
21	256	13.0%	278	13.8%	344	16.9%	373	18.5%	322	16.8%	351	18.3%	314	16.2%	309	16.1%
22	138	7.0%	147	7.3%	165	8.1%	225	11.1%	202	10.5%	187	9.7%	195	10.1%	179	9.3%
23	68	3.5%	45	2.2%	55	2.7%	63	3.1%	74	3.9%	60	3.1%	57	2.9%	55	2.9%
24	33	1.7%	25	1.2%	21	1.0%	17	0.8%	25	1.3%	20	1.0%	18	0.9%	17	0.9%
25+	225	11.4%	190	9.4%	182	8.9%	143	7.1%	96	5.0%	91	4.7%	91	4.7%	81	4.2%
Unknown																
Total	1967		2021		2041		2021		1915		1923		1933		1924	
<=20	1247	63.4%	1336	66.1%	1274	62.4%	1200	59.4%	1196	62.5%	1214	63.1%	1258	65.1%	1283	66.7%
21+	720	36.6%	685	33.9%	767	37.6%	821	40.6%	719	37.5%	709	36.9%	675	34.9%	641	33.3%
24+	258	13.1%	215	10.6%	203	9.9%	160	7.9%	121	6.3%	111	5.8%	109	5.6%	98	5.1%
25+	225	11.4%	190	9.4%	182	8.9%	143	7.1%	96	5.0%	91	4.7%	91	4.7%	81	4.2%

Beginning with Fall 2003 data, Continuing Education students are no longer counted separately.

University of Minnesota, Morris Student Body by Age, 2007-2009

