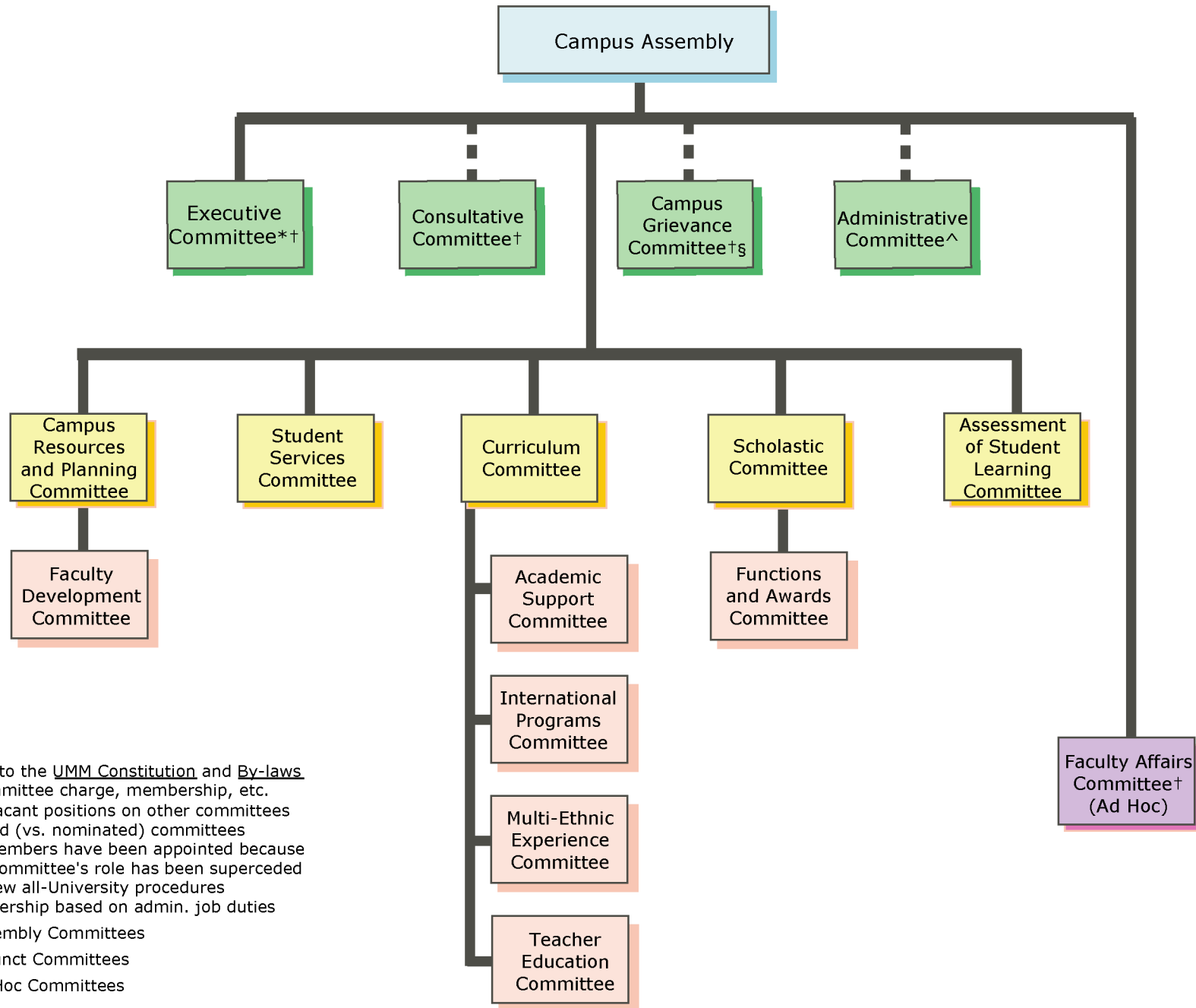


# University of Minnesota, Morris Governance Committee Structure‡



‡Refer to the UMM Constitution and By-laws for committee charge, membership, etc.

\* fills vacant positions on other committees

† elected (vs. nominated) committees

§ No members have been appointed because the committee's role has been superceded by new all-University procedures

^membership based on admin. job duties

■ Assembly Committees

■ Adjunct Committees

■ Ad Hoc Committees